



Mid Suffolk Disability Forum

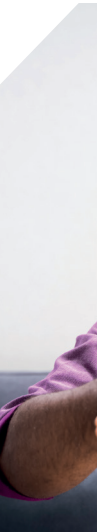


Welcome to the Mid Suffolk Disability Forum

The Mid Suffolk Disability Forum is set up as a reference group to assist Mid Suffolk District Council to listen, learn and consult with disabled people.

The Forum creates opportunities for disabled people, their families and disability organisations in Mid Suffolk to come together to:

- Consult directly with Mid Suffolk District Council services and facilities
- Provide a collective and stronger voice on all issues of disability
- Make a positive difference to disabled people, and
- Improve lives





Meetings

The Forum meets quarterly (January, April, July and October) normally in the Salvation Army Centre, Violet Hill Road, Stowmarket or via Zoom

Recent topics discussed include:

- Issues relating to public transport
- Access to shops and businesses in Mid Suffolk
- Access to Needham Market Railway Station
- Redevelopment of the Regal Theatre, Stowmarket
- Health and social care services
- Access to leisure opportunities



**For further information,
visit our webpage at:**

[https://www.midsuffolk.gov.uk/
communities/mid-suffolk-disability-forum/](https://www.midsuffolk.gov.uk/communities/mid-suffolk-disability-forum/)

Who can go to the Forum meetings

- Everyone with an interest in disability
- Disabled people and their family carers, who live in Mid Suffolk, including people with physical disabilities, sensory disabilities, learning disabilities or mental health problems
- Representatives of disability organisations that provide a service to people who live in Mid Suffolk
- Representatives of Mid Suffolk District Council and Town and Parish Councils

**Join now, membership is free
and everyone is welcome**

Contact: **Linda Hoggarth**

Telephone: **01473 464690** or

email: **linda.hoggarth@avenuesgroup.org.uk**

