

# Mid Suffolk Level 1 SFRA

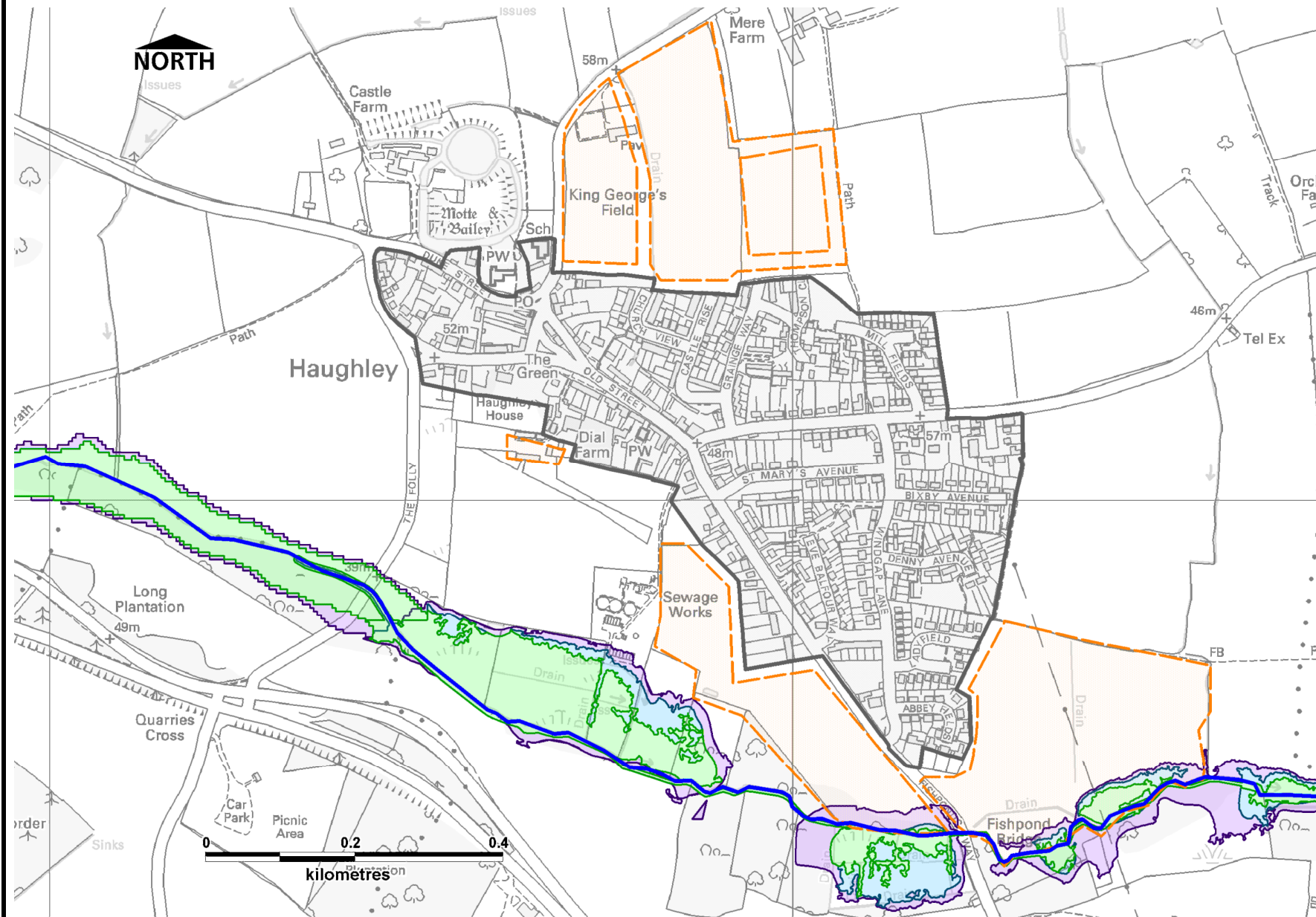


Mid Suffolk District Council

Haughley

Key Service Centre

Map C-23 Flood Risk 2007



Summary of settlement

Haughley is a village with a population of approximately 1700. Key services include shops, post office, school and bus service.

Flood Risk

The settlement of Haughley is situated outside of Flood Zones 2,3a and 3b. The River Gipping flows to the south of Haughley but its associated Flood Zones do not encroach onto the settlement. Haughley is underlain by minor aquifer of varying vulnerability and so the potential for groundwater flooding exists. DG5 data for external and internal sewer flooding incidents has been obtained from Anglian Water which shows no occurrences of sewer flooding in Haughley.

Potential Development Issues

The potential development site to the south of Haughley, near fishpond bridge is partly situated in Flood Zones 2,3a and 3b. There are also conservation areas, special landscape areas and an ancient monument.

This map is based upon Ordnance Survey material with the permission of Ordnance Survey on behalf of the Controller of Her Majesty's Stationery Office © Crown copyright. Unauthorised reproduction infringes Crown copyright and may lead to prosecution or civil proceedings.  
Mid Suffolk District Council License Number 10001780 Contract Number 2007/01

Some features of this map are based on information provided by the Environment Agency, Copyright © Environment Agency, 2007

- ★ Historic Flooding
- Flood Warning Area
- ▭ MSDC Boundary
- Critical Ordinary Watercourse
- Main River
- Potential Land Bid Sites
- Flood Zone 3b
- Flood Zone 3a
- Flood Zone 2
- Urban Areas

# Mid Suffolk Level 1 SFRA

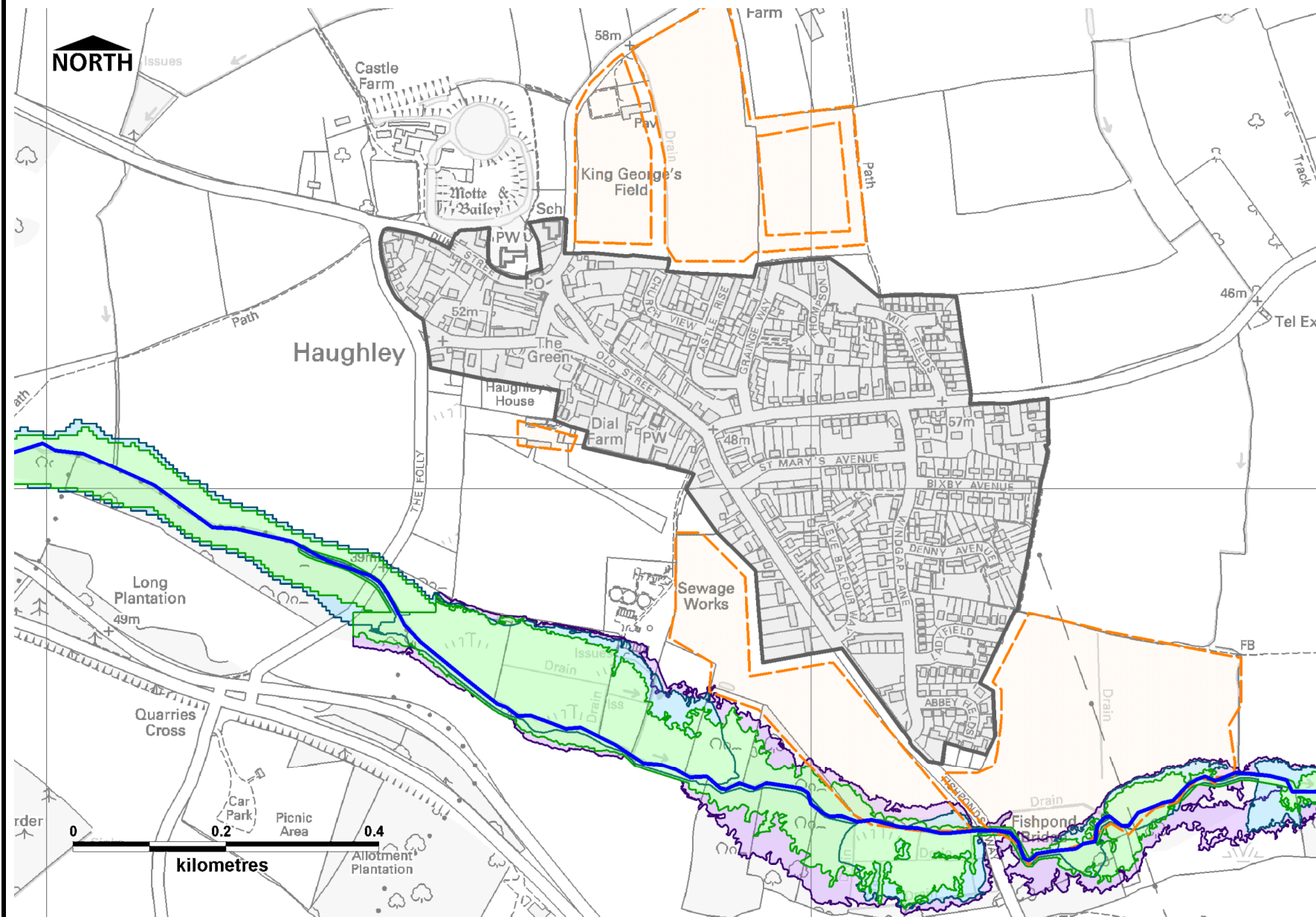


Mid Suffolk District Council

Haughley

Key Service Centre

Map C-24 Flood Risk 2107



Summary of settlement

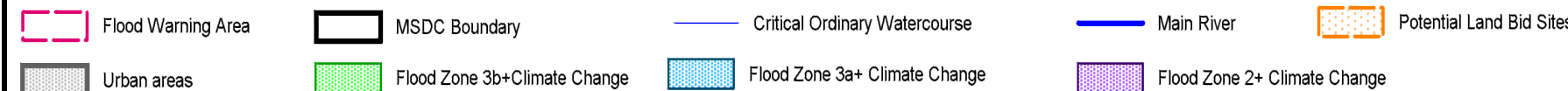
Haughley is a village with a population of approximately 1700. Key services include shops, post office, school and bus service.

Flood Risk

Haughley is situated outside of Flood Zone 2, 3a and 3b in 2107. Potential flooding from pluvial, sewer and groundwater sources is possible.

Potential Development Issues

Larger areas of potential development sites fall within Flood Zones in 2107.



This map is based upon Ordnance Survey material with the permission of Ordnance Survey on behalf of the Controller of Her Majesty's Stationery Office © Crown copyright. Unauthorised reproduction infringes Crown copyright and may lead to prosecution or civil proceedings.  
Mid Suffolk District Council License Number 10001780 Contract Number 2007/01

Some features of this map are based on information provided by the Environment Agency, Copyright © Environment Agency, 2007