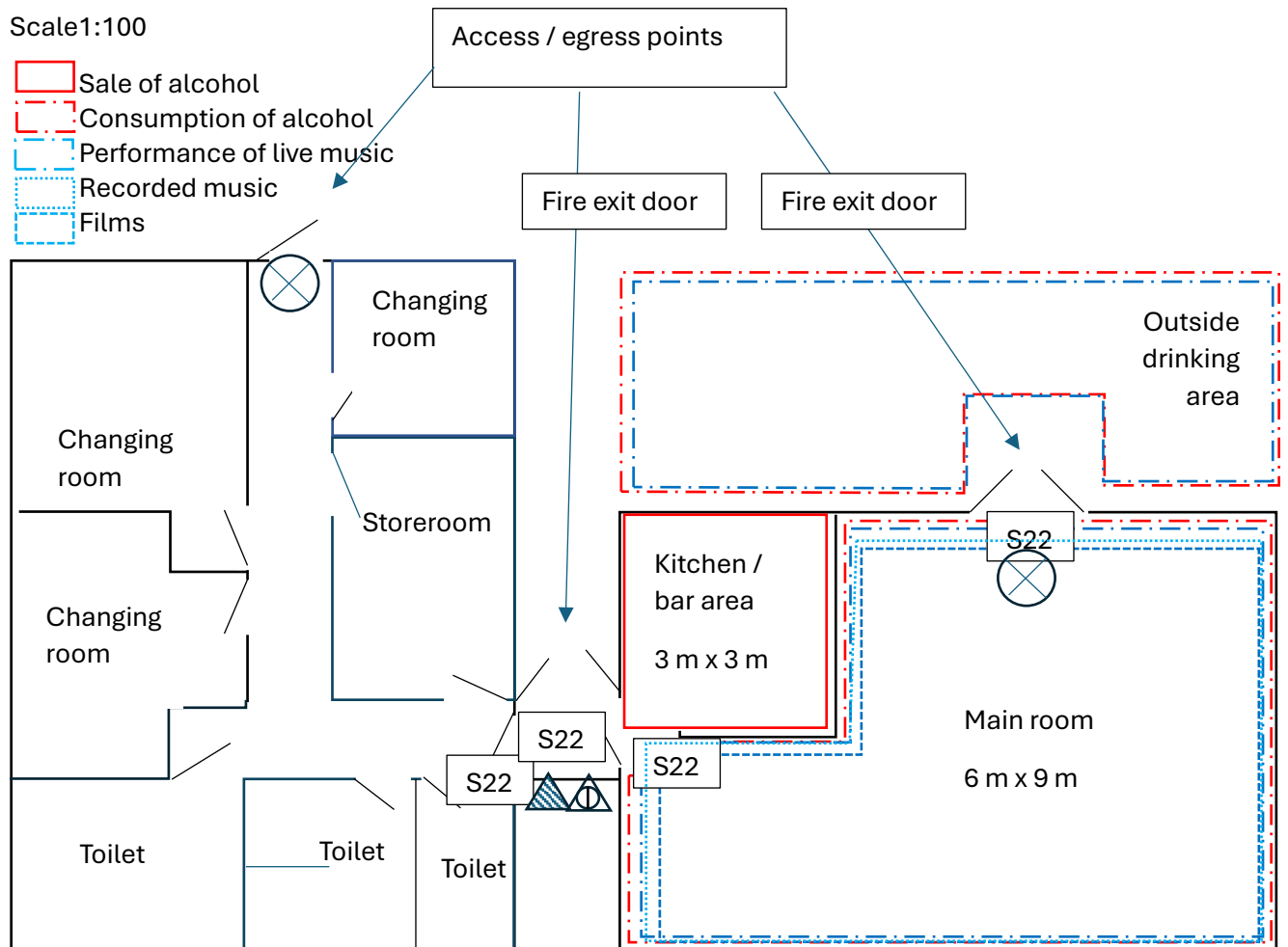


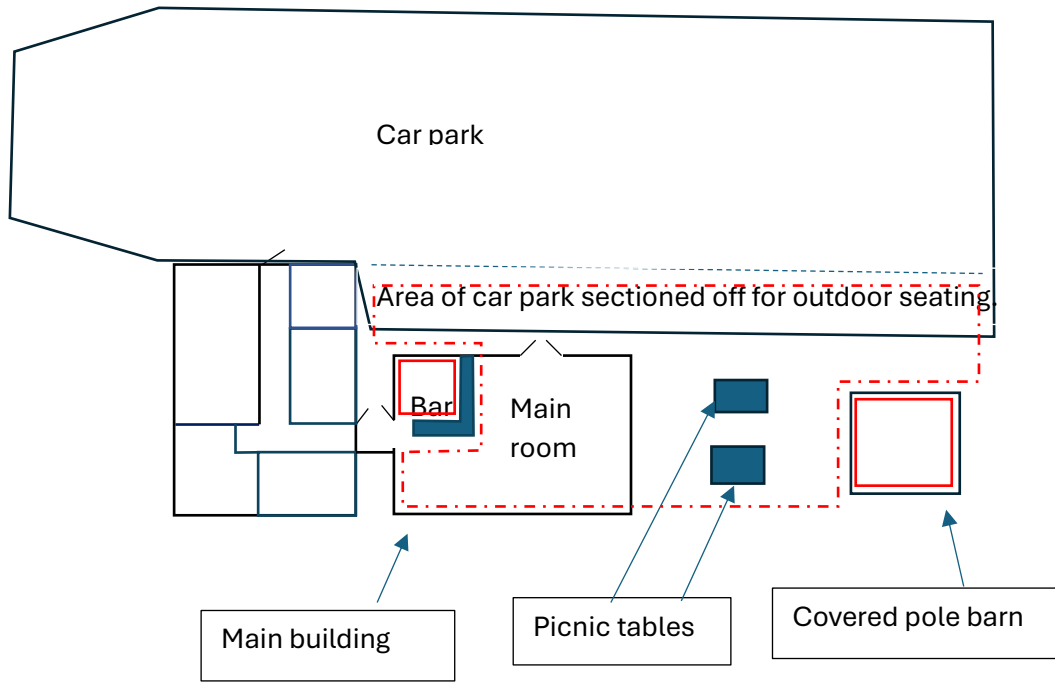
Three plans:

1. The building, showing fire notices, fire extinguishers, areas for sale and consumption of alcohol, performance of live music, and the playing of recorded music and the showing of films.
2. A plan showing the car park and covered pole barn to show more clearly the areas designated to sell alcohol under the cover of the pole barn and the outside drinking area.
3. An aerial view of the land in which the Community Club operates, to show the position of two marquees, one used for selling alcohol and one used for housing a band for live music.

Plan of main building showing areas for licensable activities.

Scale 1:100





Plan showing pole barn occasionally used as an outside bar, and extent of area set aside for alcohol consumption .

Marquee used for band at larger events.



Aerial views showing the entire field, buildings, football pitch, tennis court. The white outline shows the extent of the land rented by the Community Club.

Marquee used to house bar for large events.