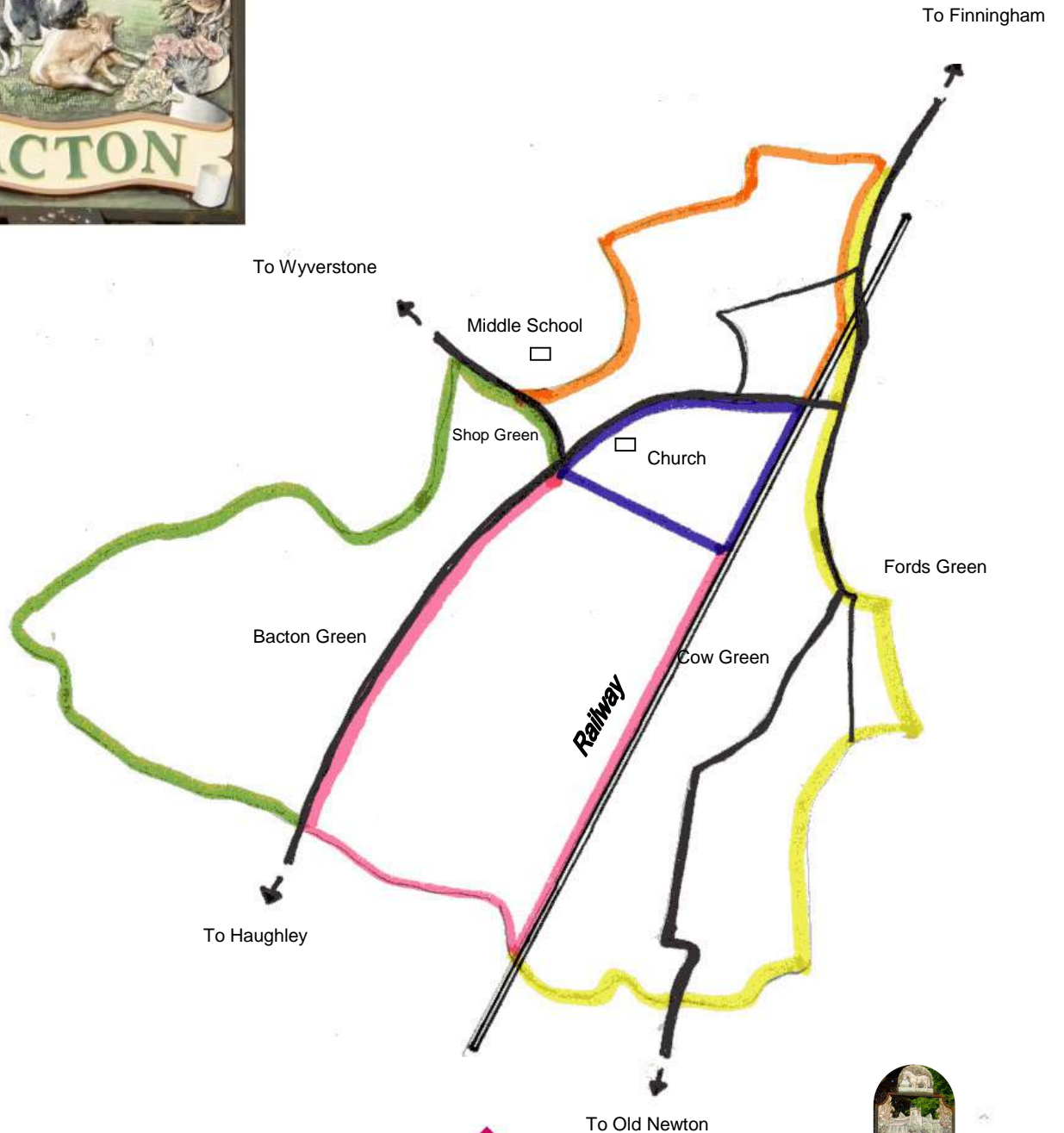




---

# Bacton Parish Plan 2010

---



Sponsored by



Bacton  
Parish Council

---

“It’s a really lovely place to live”

---

*Published July 2010*

---

## Bacton

"It's a really lovely place to live"

"I'm happy here. It's a lovely little village"

"We love our village and it has a lot to offer"

"It's a really lovely place to live; hopefully it won't be ruined by future changes and too much new housing and loss of countryside"

"Pantomime by 'friends' excellent for community spirit"

"Bacton Shop is very well stocked, everything you need and open at good times for our family. Has become essential for our life-style."

"Bacton and the surrounding villages are a great place to live. Great care is needed to maintain this with pressures of more housing and the threat of wind turbines"

"I think that this is a great questionnaire and really appreciate the opportunity to express my ideas and opinions. Thank you! It really does give Bacton even more of a community feel"

## No wind farms

"I think that most people would still prefer to see village life as it should be - a village. Over development on a large scale ruins this as is seen in many villages across the county"

"It would be nice if a parish magazine just with clubs and up and coming events was available I lived in Bacton 2 years before realising there was a parish mag. but as I understand it you buy them from the shop. Perhaps just flyers put through doors on forthcoming events. I don't mind helping to deliver them. In Haughley the mag. is free and has more info. as it is a more regular mag. Therefore it is up to date and keeps villages aware of forthcoming events"

"I think the footway added near the village hall is great. This should be extended down past Earls Green Rd. to the Scout Hall. This is for leisure walkers, but mainly for pedestrian safety. I think it is very dangerous because of the speeding traffic. Particularly in winter - this part could also do with some street lighting. Often the cars get very close before they see pedestrians on the road"

"More community cohesion via effective communication ie village magazine website/forum"

"I feel very strongly against anymore house building in Bacton. Any further development will make the village lose its identity, increase traffic and demand on local infrastructure"

"I am very keen to see a decent play area in Bacton for children and somewhere for the youth too. If this was a possibility I would like the youth involved in decisions (then they may be less likely to vandalise)"

"Bacton isn't really child friendly, so the playing field needs improving to keep kids occupied"

"At St Mary's Play Area there could be better/improved equipment for children. Very poor at the moment"

"For the council to hold meetings (well advertised) for young people to express their opinions. Opportunities for a young voice on the council"

"More activities and clubs for older teenagers"

# Contents

	<b>Page</b>
<b>Forewords</b>	4
<b>1 Introduction to the Parish of Bacton</b>	6
<b>2 Objectives &amp; Timescale</b>	7
<b>3 How we went about it</b>	8
<b>4 The Methodology</b>	8
<b>5 Consultation Results</b>	
<b>5.1 Background</b>	9
<b>5.2 Housing Needs</b>	11
<b>5.3 Travel &amp; Transport</b>	12
<b>5.4 Safety &amp; Policing</b>	14
<b>5.5 Healthcare</b>	14
<b>5.6 Use of Services (Facilities in Bacton)</b>	15
<b>5.7 Communication of Information</b>	16
<b>5.8 Faith</b>	16
<b>5.9 Amenities (and Clubs &amp; Social Facilities)</b>	17
<b>6 The views of Bacton’s youngsters</b>	
<b>6.1 Individual Information</b>	18
<b>6.2 Traffic &amp; Transport</b>	
<b>6.3 Things to do</b>	
<b>6.4 Feelings</b>	19
<b>7 The Business Community</b>	20
<b>8 Action Plan</b>	21



“I like the open spaces, big fields, the country side and it would be better if new houses were not always being built, it is a nice country place”

## **Forewords:** **- from our District and County Councillors**

We are grateful for the opportunity to say a few words regarding the formulation and content of the Bacton Parish Plan.

As elected representatives we often use our own judgement on matters that directly influence the lives of the people in our community. The information we use to form these decisions can be based on conversations with local residents or listening to opinions expressed at Parish Council Meetings. Now that we have the Parish Plan as a valuable tool in our armoury it is our challenge to make sure that this document does not sit idly on a dusty shelf, it deserves to be a living document that delivers results worthy of the overwhelming community engagement demonstrated so far. To have the Parish Plan, with such a comprehensive response from residents, confirms to us what we suspected all along, that Bacton has a strong, committed and dedicated community capable of achieving the wishes and desires expressed within this valuable document to make an already wonderful place to live - even better.

We look forward to working with all of you to achieve the future Bacton deserves.

Sarah Stringer  
Mid Suffolk District Councillor

Andrew Stringer  
Suffolk County Councillor

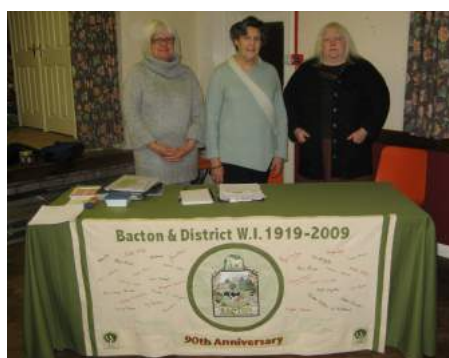
## **- from our MP**

Congratulations are due to the Bacton Parish Plan Steering Group, and to Bacton Parish Council, for the excellent initiative they have taken both in taking steps to discover the needs and concerns of people in the Parish of Bacton and also for producing a Parish Plan which will act as a guide for the future of the village.

I wish you every success with this project and hope that it may lead to useful improvements in the lives of those who live and work in the area.

David Ruffley MP  
Member of Parliament for Bury St Edmunds

House of Commons, London SW1A 0AA  
T 01359 244199  
E [davidruffleymp@parliament.uk](mailto:davidruffleymp@parliament.uk)



## **Forewords:**

### **- from the Chairman of the Parish Plan Steering Group**

Well, here it is at last, a Parish Plan for Bacton.

The Plan is in two parts – the first is the Report, a snapshot of our views in June 2009 on our village, environment, people, services and economy. The second part is the Action Plan, this looks to the future and sets out a number of actions to deal with suggestions raised by the parish plan process.

What happens now is up to all of us, and in some ways it is just the start – whilst we hope some of the action points will be taken up by the parish, district or county councils, most of them will need the support of individuals, groups or organisations to make them happen.

The Action Plan needs your continuing support and involvement if we are to succeed in delivering it for the benefit of all of us now and in the future. So please get involved to make Bacton a better place.

Finally, I would like to thank all those who have contributed in some way to the plan, those of you who completed the questionnaires, the large army of volunteers who helped distribute, collect and process them on behalf of various local clubs and organisations. Simon Holdich for editing it, and all the members of the parish plan committee who have invested a lot of time and effort over the last few years, especially Helen Thomson who pulled it all together, Rose Graham for keeping us organised and Andrew Grant for his presentations.

*Mark Black*

Chair, Bacton Parish Plan Steering Group (781243)

[www.bactonparish.org.uk](http://www.bactonparish.org.uk)

The Parish Plan Steering Group Members:

Rose Graham - Secretary (780201 & [parishplan@bactonparish.org.uk](mailto:parishplan@bactonparish.org.uk)),  
Bernard Gant - Treasurer (781630), David Black (781347), Bernard Coxhead (782927), Andrew Grant,  
Susan Holdich (781054), Paul Howlett, Keith Miller (781648), Helen Thomson (781255)

### **- from the Chairman of Bacton Parish Council**

I am very pleased to be able to write this foreword for the Parish Plan.

A great deal of work has been carried out since the public meeting in October 2007 agreed that Bacton should have its own Parish Plan and to set up the Parish Plan Steering Group. Most residents of our village have contributed in some way, not least in completing a questionnaire seeking views on the village. This final document summarises residents' views on the village, their concerns and hopes for the future of Bacton. It will inform and guide the Parish Council, Mid Suffolk District Council and Suffolk County Council.

I would like to thank members of the Parish Council for their support, the Parish Plan Steering Group and the many volunteers who drafted and delivered the questionnaires and analysed the data collected. I am grateful also for the help and financial support of Suffolk ACRE, Mid Suffolk District Council, Suffolk County Council and DEFRA.

The Parish Council are strongly committed to the actions recommended in this Parish Plan and we want to involve as many residents as possible. We want to build on the community feeling that was very apparent at our public meetings and drop-in sessions. I urge everyone in the village to get involved in some way. Together we can make Bacton an even better place to live.

*John Gooderham*

Chairman, Bacton Parish Council

Members of the Parish Council: Robert Black, Bernard Gant, Mary Hawkins, Paul Howlett,  
Philip Jeffries, Harry Steed, Rod Wickenden, Paul Wigglesworth  
Parish Clerk: Jane Brookman [bactonparishclerk@googlemail.com](mailto:bactonparishclerk@googlemail.com) 01359 230897

# Introduction to the Parish



Bacton is a popular, vibrant, sprawling village situated about 5 miles off the main A14 trunk road, which links the Suffolk towns of Ipswich (12 miles) and Bury St Edmunds (16 Miles). The nearby town of Stowmarket (about 6 miles south) provides a range of services including main line rail links to Norwich, Peterborough, Cambridge and London. The London to Norwich railway line runs through the parish although there is no longer a railway station.

Bacton has recently been designated a Key Service Centre in the Local Plan. It has a population of 1227 (2001) and the settlement lies mainly along the C563 and the B1113.

Bacton is surrounded by mainly arable farm land and retains its traditionally strong links with the farming community. The road and rail links make the area popular with commuters as well as local people.

The village has a range of housing. It has some very old properties; there are post-war estates, and some small modern developments, with bigger ones planned.

The village is popular with all ages, from young families to the elderly, most of whom have access to a number of services in Bacton, neighbouring villages and Stowmarket.

Most people are employed outside the village.

“We love our village and it has a lot to offer.”

“I like the schools! I think that we are well educated and we have fun lessons. And people are very friendly”

Within the village there are two schools - a Community Middle School and a Primary School. There is also a village Play Centre (now housed in a wonderful purpose built building) operating on a daily basis; one public house; a village hall acting as centre for a number of social activities, entertainments and meeting groups; two garages; a Surgery; a Rest Home for the Elderly; a Scout Hall, Bowls Club; St Mary's Church and a shop (open 7 days a week) with a Post Office.

Several farms are located within the parish boundary as are a number of small businesses providing plumbing and electrical services, joinery, building, motor vehicle repair, tree surgery, computer consultancy, publishing, hardware, portable space and agricultural services amongst others.

The sports facilities vary greatly from the very new Football Centre, with its purpose built pavilion, and the Bowls Club, which hosts national events, to the more limited facilities for tennis and cricket.

Like many other villages in Suffolk, Bacton is having to contend with a number of challenges - challenges best faced as a community, working together alongside neighbouring parishes and with the support of local government organisations.

Perhaps the most challenging decisions are made outside this community - on the new housing developments anticipated by the designation as a Key Service Centre and on the proposed implementation by the Local Education Authority of a two tier education system to replace our current three tier one. The effects these decisions will have on the village are not clear but the Parish Plan gives the Parish a voice as to how they feel things should proceed.

New Play Centre



# Objectives and Timescale



## Our Objectives:

- To provide the evidence about what the residents of Bacton want to retain and protect about their village and what they wish to see developed.
- To develop a clear and feasible Action Plan to enable the Parish Council, the residents and other stakeholders to identify with the priorities and take responsibility for implementing them.
- To inform Parish, District and County Councils and other bodies of the opinion of residents on the issues that are important to them.
- To help generate an understanding of community responsibilities and involvement in making Bacton a better place to live.
- To indicate where there is a proven need for services or facilities, and so help secure them.
- To help unlock grants for village projects
- To secure the adoption as Supplementary Planning Guidance of the measures identified by residents to preserve their village identity and its unique rural environment

Policies and local development frameworks are supposed to be founded on a thorough understanding of an area's needs, precisely the issues a Parish Plan should cover. Many local authorities, including Mid Suffolk, lack the resources to carry out local surveys. It therefore makes sense for them to use existing resources such as Parish Plans to inform their preparation of local development plans and policies. We intend that this Parish Plan will be used as an important part of the evidence on which Mid Suffolk District Council's future plans for our village and surrounding villages will be based.

We also hope that it will give our Stakeholders and Volunteers the opportunity to develop our village given that we will all have an understanding of the concerns and priorities that the community has.

"I think that this is a great questionnaire and really appreciate the opportunity to express my ideas and opinions. Thank you! It really does give Bacton even more of a community feel"

## Timescale

- o 25 Oct 07 - Initial Public Meeting
- o 12 Jan 08 - Website up & running  
<http://www.onesuffolk.co.uk/bactonparishplan>
- o Feb 08 - Grant Application to, and approval from, Suffolk ACRE
- o 6/7 June 2008 - Public consultation days at Bacton Village Hall
- o 24 Jul 08 - Business Meeting at Lunchtime
- o 2 Aug 08 - Drop in at Bacton Fair
- o Aug 08 - Jan 09 - Devising questionnaire
- o 2 Feb 09 - Piloting questionnaires
- o 20 Feb 09 - Questionnaire Printed
- o 6/7 March 09 - Training sessions for those distributing and collecting questionnaires
- o 20-29 Mar 09 - Distribution of questionnaires
- o 7/8 April 09 - Return of all questionnaires
- o 17 April 09 - Start of training of data entry volunteers
- o 9 Jul 09 - Data input by volunteers complete
- o 14 July 09 - Statistics run using Suffolk ACRE software
- o 15 July 2009 – April 2010 Data analysis
- o 22 April 10 - Public Meeting in village hall to feedback key outcomes and discuss priorities for the action plan
- o May - June Writing of Parish & Action Plan
- o June - Editing of Parish Plan
- o July - Printing & Distribution of Plans



# How Did We Go About It?

In October 2007 a well attended public meeting in the village hall gave overwhelming support for a Parish Plan for Bacton. A Group was formed, charged with submitting an application to Suffolk ACRE (Action with communities in rural England) for grant funding to carry out a village survey and produce this Parish Plan. We are indebted to the Parish Council who have supported us throughout with a lot of encouragement as well as a generous donation. And to Suffolk ACRE who provided us with much needed advice when it mattered. Above all, however, the success of the venture is due to all those residents who contributed their thoughts and views and who gave so generously of their time and effort when called upon.

Thank you.

## Methodology

Early in the planning cycle the decision was taken to survey the village using two questionnaires; a main questionnaire to be completed by residents 16 and over and a Youth Questionnaire for the 8 to 15 age group. The data obtained was then entered in to a Suffolk ACRE analysis program by local volunteers.

The main questionnaire contained 60 questions and 470 questionnaires were distributed with 418 returned completed, a remarkable response rate of over 89%. The 418 households who responded represented 847 residents.

The Youth Questionnaire contained 21 questions. The number of young people in the village aged 8 – 15 who returned completed forms was 95 out of a total of 100 issued. A response rate of 95%. This is a marvellous result and a credit to the youth of the village.

A lunchtime meeting was held to find out what local businesses felt about the Parish and what they wished to be done to support them. Of the 27 businesses invited 9 attended the meeting and their views are presented as part of this report.

The questionnaires gave everyone the opportunity to express their feelings about the village. These replies were anonymous, apart from a separate reply slip for those wishing to supporting activities in the village or volunteering to help in general. We had an amazing 40 adults and 12 youngsters who said that they would help.

We chose to input the questionnaire responses ourselves, using software purchased from Suffolk ACRE, and we used this software to analyse the data as well.

After identifying the key issues and messages from the data analysis we wanted to check that we were interpreting the information correctly. We also wanted to keep the Parish informed on progress. To this end the results of the two questionnaires were presented to the village at a Public Meeting held in the village hall on 22<sup>nd</sup> April 2010. We were amazed at the turn out and active participation and views on the findings.

### Key Points from the April Public Meeting

- Better provision for Bacton's older residents
- Reduce traffic speeds through the village
- Improve safety for pedestrians and cyclists
- Provision of new affordable housing for locals
- Better local access to leisure, keep fit and evening classes
- Sort out the dangerous congestion and parking at Shop Green and outside Schools
- Improvements to play areas and playing fields
- Better bus links to other towns and villages
- Give young people a voice in local affairs
- Farming. There are a lot of empty fields that could be farmed for crops for local produce. This needs to be looked into.
- There are many things on for the youth of this village but they choose not to take advantage of them.

This public meeting was followed by the writing of the Plan and our Parish Council will distribute this to every household in the Parish.

The full data from the questionnaires will remain available for viewing and analysis on Suffolk ACRE's website by application to Mark Black for the relevant passwords and URL.

The statistical results as well as the detailed comments added to the responses from both questionnaires is available for reference from Mark Black (781243) or Rose Graham (780201).

Additional copies of the Parish Plan are available from the website:-

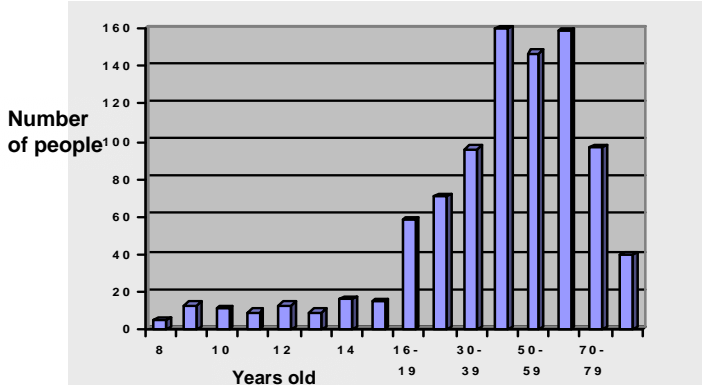
<http://www.onesuffolk.co.uk/bactonparishplan>.



# Background

The population, including children, is currently just over 1,200 living in 483 dwellings.

Gender split is about equal male & female.



Of the 919 people who answered the question on age, 91 are aged 8-15, 661 are in the 16 – 60 age group and 296 are 60 or over.

More than a third of our respondents, nearly 300 people out of a total 826 who returned questionnaires were over 60 when we carried out our survey in 2009. At the time of the last census in 2001, less than a quarter of the population of 1,227 were over 60. We have no current headcount figure for the local population so we can only compare on our sample, but this does suggest a trend within Bacton towards an ageing population. This may be due to the continuing effect of the post-war ‘baby boom’ and the ageing trend of the population in general, but certainly indicates that we need to pay attention to the views and requirements of this large group of people.

People aged:	2001 Census	2009 Parish Questionnaire
60 to 69	11%	19%
70 to 79	8%	12%
80 and over	5%	5%

“Pantomime by ‘friends’ excellent for community spirit”

“The council should hold meetings (well advertised) for young people to express their opinions. Opportunities for a young voice on the council”

Just under 6% of the parishioners have lived in Bacton for less than a year whilst 57% have lived here between 1 and 19 years. Over 37% have lived in Bacton for over 20 years. Of those leaving Bacton over the last year 9 left to set up home in a new household, 9 left to live independently, 7 left for further education, 3 because they couldn’t afford any available housing and three more because there was no local authority housing, no local work or because of other financial commitments.

The replies received show that 87% of homes are owner occupied with about 11% being rented. Almost 49% of houses are 2 storey and 44% are bungalows. The majority of homes have 3 bedrooms (42%), 25% have 2 bedrooms and 20% have 4 bedrooms.

Communication is one aspect of village life that needs to be improved and a focal point for this is the Parish Council (PC). 639 people in the Parish have never attended a Parish council meeting though 400 feel that the PC does a good job, and 120 people feel that it is open and accessible.

We are very fortunate to have a Community Middle School, Community Primary School and a just recently opened new Play Centre in our village. These are well used by local children as well as all the children in our school catchment area and further afield. However, of the local youngsters 57 go to High School outside our Parish, 55 go to the Community Middle School, 45 to Primary School, 25 go to College or University, 23 to Mother and Toddlers and 14 to the Play Centre/Under 5s.



# Background

Most of the adult Parish is employed in full time or part time work, or self-employed or working from home (515). There are 232 retired respondents and 63 in education (full-time, part time & government training schemes). There are 75 househusbands or wives and 33 are unable to work through illness/disability or not currently employed. 21 do voluntary work.

There are many reasons for living in Bacton, the main one being the desire to live in a village environment. Many move to live with their partner and close to their family, others because of the proximity to work and some quite simply because they have lived here all their lives.

Quite a number of people live in Bacton because of their proximity to work so it's quite interesting to see the distances that some people travel. 224 people work 5-20 miles away, 69 actually work in Bacton with the same number working over 40 miles away, 47 are less than 5 miles distant, 41 work 21-30 miles away and 20 31-40 miles distant.

"We need a litter bin next to bus shelter at Shop Green"

"We need to have a more responsible attitude to the dropping of litter. This should be instilled into pupils of all ages by the schools with penalties on pupils and parents if abused".

"Bacton between the shop and schools is covered in litter. A campaign involving both schools and the Play Centre is needed".

"Litter is a big problem. We need another litter bin at the start of the path leading off the church yard towards Pound Hill".



For some time now the Parish population have been coming to terms with the Local Education Authority's decision to replace the current three tier education system with a two tier one. A large number in the parish are against this (529). Only 109 are happy to see it go ahead. The ramifications for the Parish are considerable as problems of parking and transport may well be exacerbated depending on how the two school buildings are used. The use of the school buildings as community buildings may also be in jeopardy. Weighed against this is the considerable feeling that the schools should be more involved in our community life (502).

Who pays for everything that we want as a village? Some things may need no money but time and interest from volunteers. The Parish feels that the government should be the first to approach for funds (514), the lottery next (504) and these followed by fundraising, subscriptions and Council Tax.

The questionnaire seemed to cover everything that the Parishioners wanted to talk about and when asked what they would like to see improved in the village, of the 187 who answered, 35 raised speeding and speed limits as an issue. Among the other matters raised were footpaths, HGV restrictions, congestion at the primary school, litter and dog mess, lighting and bus stops & shelters. These are all important pointers for the Parish Council and District & County Councillors as well as for the volunteers.

One additional suggestion is the setting up of a village museum, possibly in the Church or Village Hall where village photographs and artefacts can be properly managed and displayed to the public.

"I'm happy here. It's a lovely little village."

# Housing Needs

There are 172 two-person households in Bacton, 87 four-person, 71 one-person, 56 three-person, 16 five-person, 7 six-person, and one each of seven- and eight-plus person households.

There are 16 residents who would like to find alternative accommodation in Bacton now with 38 stating that they would like alternative accommodation within the next 3 years and 87 saying that they would like alternative accommodation in 4 – 10 years time. There are 10 residents on the District Council’s housing register.

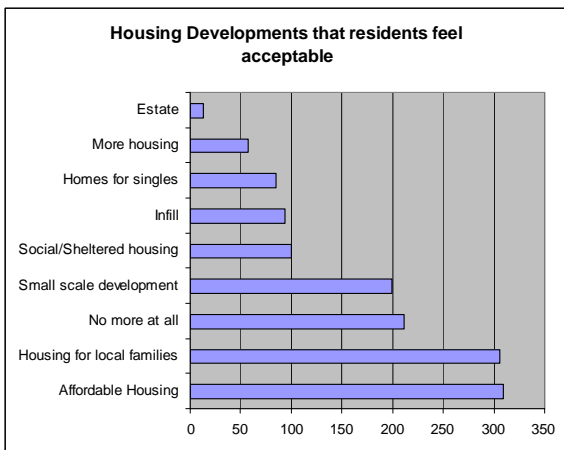
Of those wishing to buy, 40 residents will need a family home, 39 a starter home and 33 a bungalow. Of those wishing to rent 14 will need a starter home, 7 a bungalow and 2 a family home. Of the remainder 9 want sheltered housing, 9 want residential care and one would like a shared equity property.



“Bacton and the surrounding villages are a great place to live. Great care is needed to maintain this with pressures of more housing and the threat of wind turbines”

“I think that most people would still prefer to see village life as it should be - a village. Over development on a large scale ruins this as is seen in many villages across the county”

“I feel very strongly against any more house building in Bacton. Any further development will make the village lose its identity, increase traffic and demand on local infrastructure”



The residents felt that the type of housing development that would be acceptable in Bacton was affordable housing (309) and housing for local families (306). However 211 residents didn’t want any more housing. Others felt small scale housing development (199), social/sheltered housing (100), infill (94) and homes for single people (85) were also acceptable. Only 57 felt that more houses in general were needed and only 13 felt that a housing estate would be acceptable.

## Key Actions

- Ensure there is an appropriate mix of house types and sizes in all planning proposals.
- Make sure that people with a strong local connection have first choice of any affordable homes available.
- Lobby for high quality of design and build in all affordable homes.
- Continue to monitor local housing need.

# Travel and Transport

**How Do People Get About?** Asked about their normal mode of transport in and out of the village, 710 of people said they used their own car with 38 taking the bus – school or public; 26 walking and 14 cycling. Very few use car-share, taxi, or mobility vehicle.

172 families have 2 cars, 158 have 1 car, 35 have 3 and 16 families have 4 or more. Of the under eighteens in households 54 get to school/college by car, 49 walk, 39 take the school bus, 21 cycle and 12 take public transport.

In those households who drive their children to school 20 say it's because it's too dangerous to walk or cycle, 18 say it depends on weather conditions and 13 because it's too far to walk or cycle. Some are not on a bus route (9) or there is no suitable public transport (4), 8 find it quicker, 8 find it more convenient and 3 are worried about stranger danger.

Most people keep their cars in a garage or in their driveway with only 65 claiming to park on the road. However 99 people feel that there are limited places to park, 163 have problems with people blocking their entrances and pathways, 67 have problems with people parking on grass verges and 83 say there are limited places for large vehicles to pass each other.

## Bus Services

184 people said they had used the public bus service from Bacton but felt improvements in the bus services could be made i.e. more frequent and reliable service, more bus shelters and stops, better fares, disabled access; better availability of timetables, revised routes and links with trains from Stowmarket station. 38 people said they would use the bus every day if these improvements were made. Interestingly, if all the alterations were made 539 (74%) still would not use the bus.

“Buses ought to go at 8 - 8.30 to get people into Stow for 9am and back again at 5pm”



Bus Stop at Shop Green

Young people requested improved bus services to local towns e.g. late bus services and a morning and evening service to get to and from work or college.

When asked if they had problems visiting their friends living outside Bacton, 33 young people said “yes”.

“Not easy to get to other places. Buses not very often and don't go to many places.”

Many people remarked on traffic congestion at peak times outside the village hall, on Shop Green and at the primary and middle schools. 542 people (72%) experienced congestion caused by parking around the primary school where recent installation of a pavement has narrowed the road, with another 291 (39%) finding congestion a problem just across the road at the Village Hall. (These two parking “hotspots” may be part of the same problem). At the village shop, congestion was experienced by 549 (67%) of people. This figure could be construed as positive as it reflects the success of the shop and garage. 181 (24%) commented on congestion outside the Middle School.

“Congestion outside primary school”  
“Cars parked on bend near primary school”  
“Congestion at the village shop”



Congestion at Primary School

Note: If Suffolk County Council closes the middle school as part of its education reforms, the parking may no longer be a problem. However, if pupil numbers are increased at the primary school or if the primary school moves to the middle school site, the parking problems may be increased.

Overall 256 (31%) had experienced parking problems with 340 (42%) commenting on inconsiderate parking. 199 (26%) of people thought there should be parking restrictions at problem areas.



# Travel and Transport



**Speeding** continues to be an issue. Extending speed limits to Earls Green, Cow Green and to the Parish boundary towards Haughley was suggested. 481 (59%) are concerned about speeding traffic. Speed bumps are suggested; “warning digital read-out signs lighting up for cars over 30mph” on Pound Hill; signs at entrances to village saying “welcome to Bacton, please drive carefully”; narrowing the road (as in Elmswell); and traffic calming methods such as ‘gates’ leading into the village as in Haughley rather than speed cameras.

*“Turkey Hall Lane – speed restriction 15mph max.”  
“The lorries coming through the village seem to be getting much bigger and are using the village as a ‘cut through’. Can anything be done about this?”*

*“Don’t consider traffic calming – you just get noise due to cars braking and accelerating. Just make it safer for pedestrians by keeping them further from the road.”*

**Safety of Pedestrians & Cyclists.** There are concerns voiced by pedestrians over the lack of footpaths/pavements in outlying areas of the village and under the railway bridge. Pedestrian crossings would be helpful outside the Bacton Bull, for the Manor Surgery and where the footpath finishes on Pound Hill towards the church. Cycle paths are suggested.

*“It’s a lovely village but not safe for pedestrians in all places”*

**Danger Hotspots** are Pedestrian/Vehicle conflict under the railway bridge, outside the Primary and Middle schools. Other “hotspots” are the T junction of the B1113 where visibility is poor for traffic turning right and between the shop and the Scout Hall, where lack of footpath makes it particularly dangerous for school children from that end of the village.



Bacton Parish Plan



*“Cycling lanes just outside the centre of the village would encourage more people to cycle. I have young children and would cycle with them if I felt safer and speed limit was lowered. Currently the national speed limit applies at Cow Green where I live. I would love to cycle to school!”*

## Volume of Traffic

814 people commented on the volume of traffic; of these 173 (21%) commented on the ever increasing volume of HGVs passing through the village and 97 (12%) on the general volume of traffic.

## Improvements to Roads and Pavements

342 (45%) people want to see roads better maintained and the same number want pavements better maintained and pavements extended towards Haughley. Comments were made about narrow roads and narrow pavements.

A third of Parish households feel that more street lights are needed and 86 people feel that the street lighting is the first thing that needs improved in the village. Suggestions are to have more street lights leading to the Village Hall and in the car park; at the access to Manor Surgery; leading to the Scout Hall and on the roads to Bacton Stores from all directions. There were also suggestions to turn street lights off between 10pm or midnight and 5am.

119 (16%) people request dropped kerbs for wheel/push chairs. 101 (13%) want weight restrictions on Turkey Hall Lane.

*“At school times village hall/church area can become quite dangerous”,  
“Traffic travelling too fast coming under the bridge”*

## Key Room for improvement

*“Children, older and disabled people, and carers with prams and buggies are often disadvantaged when trying to move about the village and to access facilities”*

*“Heavy traffic, congestion and lack of pavements discourage greener forms of transport, such as walking and cycling.”*



## Safety and Policing



It's good to know that most of us (771) feel safe in our village. However 18 adults and 6 youngsters do not feel safe. For the youngsters the problems were mainly to do with traffic speed and road danger spots as walkers or cyclists.

One of the main issues is dog fouling with 534 finding this a problem. Other problem areas are fly-tipping (392); low flying aircraft (237) and off-road motor cycling (167).

Out of 239 persons reporting crime or antisocial behaviour, almost half (111) complained about noise. Vandalism and graffiti were next (72) followed by burglary (40) and drunkenness & foul language which had 35 each. Of those who reported crime, the majority seemed happy with the quality of the police response (99) with 34 feeling the response was poor.

There was also a strong demand for Neighbourhood Watch schemes (445), with less demand for the Good Neighbour (268) and Nominate a neighbour (95) schemes. Only 76 households knew that they had a Neighbourhood Watch scheme, 110 households felt they weren't in one and 220 didn't know.

### Meet the team



PC50 3148 Vince Clarkson



PCSO 3192 Stephen Johnson



PC 823 Clare Wayman

<http://www.onesuffolk.co.uk/SaferSuffolk/MidSuffolkCentral/>

### Key Actions

- Improve communication between the police safer Neighbourhood team and community and make them aware of the input we have had to this Parish Plan
- Re-establish the Neighbourhood Watch Schemes and establish the Good Neighbour and Nominate a neighbour schemes.
- Investigate methods of resolving neighbour disputes.

## Healthcare



The Manor Farm surgery is seen as being a very valuable resource for the village. Seven respondents said they visited it daily, 63 weekly, 262 monthly and 352 occasionally.

Some of the responses suggested that the success of the surgery might be used to justify additional visiting healthcare professionals such as a chiropodist (172), counselling service (96) support worker for injury victims (93), physiotherapy (5), midwifery (1), and even dentists (7). Improvements suggested in the survey included transport to health services in & beyond the Parish (241), a pharmacy with additional goods for sale, delivery of prescriptions (244) and more flexible opening hours.



"We badly need a pedestrian crossing at Manor Farm Surgery entrance on main road & street lighting. This is a problem in the dark winter evenings when surgery is still open and some people have to walk to the surgery".

"We have a brand new health centre yet many of the services given are only available at Mendlesham Health Centre - not easily accessible when you do not have your own transport"

"I would really appreciate a midwifery clinic at Bacton instead of having to drive to Mendlesham"

### Key Actions

- Improve communication between the health centre and community
- Explore with the health centre the possibility of holding some clinics e.g. chiropody and counselling.

# Use of Services

Households within Bacton are generally happy with their electricity, water and sewerage connections. Of the residents not connected to mains gas or mains sewerage facilities the majority were either happy as they were or in any case were not prepared to contribute to the cost of installation.

The majority of households rated communications into the home (TV - digital and standard), radio and broadband connections as good or excellent, with the exception of mobile phone reception which 152 rated poor.



“Bacton Shop is very well stocked, everything you need and open at good times for our family. Has become essential for our life-style.”

## Shops and businesses

There is tremendous support for the village shop and Post office, with 211 respondents using the shop daily and 385 using it weekly. Those using it do so mainly because of its convenience.

Other retail outlet facilities such as Finbows yard are also very popular, whilst more specialist services such as Lamberts Service station are used on a more occasional basis.

The Bull public house is seen as a vital part of the village. However, like many rural pubs the reality is that it does not get used by the majority of us.

Mobile facilities stopping in the village (including the library van, butcher's van, mobile chiropody services) are not used very much and it appears that many people are unaware of the services available, highlighting the need for better communication within the village.

Bacton is equipped with several community buildings including 2 schools, a Play Centre, the Scout Hall, Village Hall and now the Football Club development.

There is a strong desire to make better use of the existing facilities, especially in the schools. This might be particularly relevant if the middle school is closed.



Recycling at Scout Hall

## Waste and Recycling Services

Households appeared content with refuse collections and the provision of dog mess bins. However 534 people had experienced problems with dog fouling. 105 respondents felt that recycling facilities needed to be improved and 132 rated the provision of litter bins and roadside care/street cleaning as “poor”, especially between the shop and the schools. 392 respondents have had problems with litter & fly-tipping.



“I like having a village shop in Bacton, mainly in the summer when you can bike down to the shop”

## Communication

Most people (643) find out about village activities from the Parish Magazine or word of mouth (500 people). Notices round the village (440) are also consulted and flyers (301). Only 30 people currently use the village website. Set alongside this is the recurring view that many people in the village are simply not aware of what already exists in terms of activities and services.

The Parish Magazine includes the villages of Cotton and Wyverstone as well as Bacton. It contains a diverse range of information and is highly valued on that basis. But no magazine attempting to cover such a wide area can give prominence to specific activities, events and issues in Bacton. There may be a need for a Bacton Village Newsletter, but success would not only depend on finding people to take responsibility for this, but on the enthusiasm and hard work of any team involved, and on how well the village itself took 'ownership' of a publication of this sort.

There is also a demand for the resurrection of the Village Directory (374), a Welcome Pack for those new to the village (276), a Village Website (267) and a Village Map (259).

The Youth of the village also want a forum to communicate their needs to those who may be able to do something about them.

### Key Room for improvement

"There is a general lack of co-ordination of information provided by different village organisations"

"There is a lack of a clear reference point where people can get information about local services such as transport, local council or health services"

### Key Actions

- Develop the Parish Council Website so that it becomes a more useful, up to date community resource.
- Resurrect the village directory with annual updates.
- Develop a welcome pack for newcomers to the village.
- Produce a village map.
- Start a youngster's forum/council.
- Develop an information point in the proposed Church community area to provide a 'one-stop shop' for accessing local authorities' and agencies' services.

## Faith



About 75% of those who answered feel that St Mary's Church is important to them and that the Church should be providing more facilities for children, a community centre, meetings, exhibitions, talks, library facilities and plays & concerts. The statistics also show that they would like to have more flexible worship times and a Sunday School. They also feel that it is the Rector's responsibility to visit the sick, housebound and bereaved (as she does) and welcome newcomers to the village.

The figures for the use of the Church were 420 using it occasionally and a regular weekly congregation of 37.

### Key Room for improvement

"A large building in the centre of the village should have better facilities"

"The Rector should support new arrivals and families in distress whatever the reason"

"We need an area for informal gathering to share problems and get help and advice"

### Key Actions

- Establish a meeting place/shelter for young people to complement the Youth Club with a volunteer and internet facilities.
- Support the development of the Church building to have a community room, toilet facilities and internet facilities.
- Establish area representatives who feed important information on new arrivals and illness to the Rector.
- Develop an informal support system for new arrivals in the village.
- Support the establishment of a club/day centre for skill share and mentoring.



# Community Recreation & Amenities



Bacton Village Hall

We felt it important to find out what facilities were currently used in Bacton as well as find out what people actually wanted. Clearly many do not know what we have at the moment and this communication challenge needs to be addressed. A considerable number of people use the village hall, about 100 using it weekly/monthly and 403 occasionally – very similar to the figures for the church (see previous page). Weekly use of other facilities is: Bowls Club 18; Middle School Tennis Courts 4; Scout Hall 25; Middle School Hall 1; Primary School Hall 10; Playing Field 21 (32 monthly); children’s play area 23 (24 monthly). The tennis club has now closed.



St Mary's Play Area

The facilities at St Mary’s Children’s Play area are considered excellent by only 5 people, 59 think it is good or very good with 102 classifying it as fair. 140 thought the facilities poor. These figures show that the Play Area could be improved for those who use it. Improvements may also encourage more people to use the space.

We asked for opinions about the facilities available at the Village Hall. Since this questionnaire the village hall has had a major refurbishment with improvements to the kitchen facilities and the toilets. The building work is ongoing. The results to this particular question are therefore no longer valid. The only aspect that cannot be improved is the car parking which has at best 15 places for a hall that is used regularly by large groups. This one aspect is a considerable drawback for the village hall.

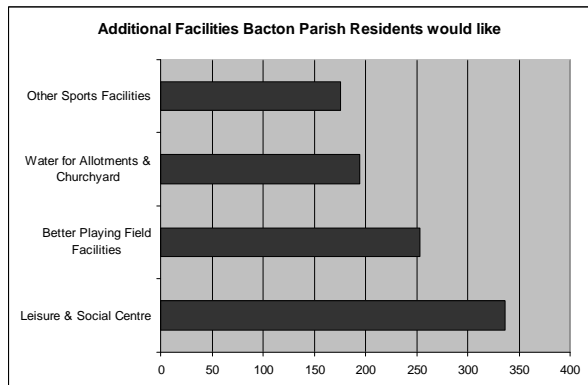
“Would be good to have a local fitness centre open in the evenings”

We also asked if there is an interest in attending new clubs and activities in Bacton. The most popular option is evening classes with 236 respondents stating that they would be interested in attending. 217 respondents suggest that they would like keep-fit classes. 152 state that they would be interested in dance classes, and 116 in yoga classes. There is also notable interest in Tai Chi (79), a luncheon club (68), an internet café and computer club (67), and a Business Club (31). Other suggestions include: music clubs, a motorcycle club, crafts and hobbies club, and a book club. Others think more people should use the existing clubs.

When asked if there is a need for a luncheon club for the elderly in Bacton, 104 over-60s agreed, including nearly half of those in the 60-70 age group. This level of interest could be sufficient to justify taking this forward as an action.

“Older people should be looked after better with more activities and better transport facilities”

We asked what additional facilities people would like to see in Bacton. The majority (336) would like a leisure and social centre. 253 said that they would like better playing field facilities. 194 would like a water supply to the allotments and churchyard. 176 would like other sports facilities and 32 made other suggestions, including a gym/spa and a beauty salon, a cricket ground, a proper running track, better maintained public footpaths, a community garden, and a swimming pool.



This does seem to fit well with the suggested use of the schools for evening classes (575); social function (443) and gym facilities (421).

“I am very keen to see a decent play area in Bacton for children and somewhere for the youth too. If this was a possibility I would like the youth involved in decisions (then they may be less likely to vandalise)”

# Youth Views

We were aware that many youngsters, aged 8-15, in the village had things that they would like to see in Bacton but had no voice in any of the village institutions. So we thought a youth questionnaire would be an ideal way to canvas their views.

Out of 100 questionnaires, 95 were completed. The respondents were equally matched between boys and girls and spread fairly evenly across the age ranges.

Almost half of the respondents (44) stated that they attended the Middle School, 29 attended Stowupland High School, 7 went to Bacton Primary School, with the remainder going to other schools. (From the Household Section, we know that 25 youngsters go to College or University, 45 to Primary School, 55 to Middle School and 57 to High School.)

Over half of those responding to the youth questionnaire intended to continue their education after the age of 16. 34 stated that they would go into 6<sup>th</sup> Form and a further 14 said they would go to college. 7 said they would look for an apprenticeship or training. However, 1 in 3 stated that they didn't know yet (32). The remaining 4 said they would look for work.

Very few (only 8) have part time employment. It is unknown whether they would like it if there was more suitable work available.

## Traffic & Transport

According to the household questionnaire, 44% of those under 18 go to their educational establishment by school bus or public transport and about 45% either walk or go by car. A few cycle.

About 1 in 3 of the respondents (33) stated that they had difficulties in visiting their friends, with the main reasons being that there were no buses (21) and that their friends live too far away to walk or cycle (15). This demonstrates that the local youth mainly rely on their parents to give them lifts, though 12 stated that their parents were unable to take them, with 6 stating that they did not like to ask them. 83 respondents stated that they depended on their parents to give them lifts to get out of Bacton. Some also walked or cycled. Only 6 used the buses. Forty-six said they would use buses if there were more of them. So, there appears to be a demand for a bus service, though it may not warrant an official one. This could perhaps be resolved by a parent with a minibus for example, though CRB checks and other regulations would make this difficult.

“Each morning I have to walk to school on the grass. We need more footpaths”

There is also a requirement for footpath/pavement and cycle-paths, with danger spots at bends highlighted and the speed of traffic causing concern. Also a requirement for the speed limit to be extended further out to the village boundaries. There are suggestions that pedestrian/zebra crossings would be good at the Bacton Bull and on Pound Hill.

## Youth Facilities

A great many young people use the playing fields, St Mary's play area, the hills and the tennis courts.

When asked what else they would like to have in the village, 71 stated that they would like a sports facility (including a swimming pool, a gym and basketball courts), 33 listing it as their first choice. The questionnaire shows there is also great interest in an assault course (61) and a skateboard/BMX park with 50 respondents liking this idea. 46 respondents suggested they would be very interested in a music and dance club, and 45 respondents said that they would like a sheltered place to 'hang out'. There was also substantial interest in a computer facility (46) and extended play facilities (45). The results demonstrate that there is significant interest in access to sports facilities. The Middle School could potentially provide the grounds for such a venture run by a qualified manager and backed by a local board and the education authority (see EADT, 14/05/10 'Town hope for site after school closure' – re. Saxmundham Middle School).

The questionnaire results indicate that the playing field is currently a key social centre for young people, being used for football and other sports and games, meeting friends, walking, and using the play area. Only 16% (15) said that they did not use the playing field.



“Roads too busy to bike to school. You could improve it by making a path at the side of the road for bikes”

# Youth Views

## Feelings about Bacton

When asked if they felt safe in the village, the majority stated that they did, with the speed of traffic and the lack of footpaths/pavements & cycle paths being the main causes of anxiety for the 7% who didn't feel safe. Bullying at school was one of the major problems experienced by the young (19), with other antisocial behaviour only affecting a minority (i.e. vandalism and drunkenness).

In terms of the future, the majority were undecided about where they wanted to live. 26 respondents thought that they would like to remain in Bacton.

A third of the respondents (33) said that they would attend meetings to discuss provisions for the local youth.

When the young were asked what they liked most about Bacton, frequent responses included: being in the countryside amongst nature, Bacton being a small, safe, quiet and friendly community, being with their friends, the play areas, good schools, and the village shop and pond.

When asked what they liked least about Bacton, frequent responses included: poor play and sports facilities, the isolation caused by the lack of public transport, the fact that there was little to do, the dangerous roads, and antisocial behaviour.

There was quite a diverse list of ideas regarding the improvements that the local youth would like to see: development of the parks and play areas; better public transport and leisure centre facilities; more things to do, more places to go and socialise; bus shelters for the school bus route, and cycle paths, footpaths/pavements were amongst those listed.

"I dislike speeding traffic to and from Middle School, no zebra crossing at the pub"

I like "Bacton Scout Group because I can make some friends"

"There is nothing to do at the weekend. So there are no activities or clubs. There could be running races and other activities on in the playing field. Or there could be cycling weekends where you go on trips round the villages around Bacton"

"Bacton could be improved by more stuff in the play park"



I like "The open spaces, big fields, the country side and it would be better if new houses were not always being built it is a nice country place"

## Key Room for improvement

"To have some more buses to get to places like: Stowupland, Earl Stonham and Ipswich or Bury so I can go to the cinema for when we get older"

"Better playing facilities and sports facilities"

"Bus shelter so that we don't get wet when waiting for the bus in the mornings"

"Pavements and speed limits on the outside of Bacton as well as the centre so that I can walk to my Friends' houses instead of wasting petrol"

"Could have a small Leisure Centre"

"Roads too busy to bike to school. You could improve it by making a path at the side of the road for bikes"

## Key Actions

- Explore improvements in the bus service especially a suitable service & times for the youngsters.
- Examine ways of improving the play areas and parks/fields
- Approach the schools and new Play Centre about developing a leisure facility for use outside school hours.
- Discuss with the relevant authorities how to go about planning for foot & cycle paths.
- Approach the Parish Council about extending the area covered by the speed limit and speeding problems of cars and motorbikes.
- Promote and support 'green travel'.
- Promote walking to school for primary and middle school pupils.

# The Business Community



There are a variety of reasons why people have businesses in Bacton. For the farmers there is little choice, but of other businesses, some set up quite simply because they already lived here; others because they liked living in the countryside. For those making an active choice geographical location (close to A140 and A14) was important as was access to market for agricultural and other products.

The business community also appreciated other things like the football, flower show, WI and bowls club etc. They liked the village centre and fishing in the pond, the community minded citizens, and the health centre.

They would like us to be more self sufficient in fuel; to see more diversification; to reopen the train station and to have more pavements around village.

Business-wise, they felt that they needed more business support and grants, and perhaps a Bacton Chamber of Commerce.

They were concerned about the speed of traffic through the village and the cost of housing and availability of affordable homes.

They felt it wrong that businesses like the Old Newton Post Office were closing; that business rates were high and that businesses got nothing for them. Government over-regulation was also a problem. They noted that Agricultural employment had declined and wondered what other local industries compensated for this. It appeared to them that there was more support for urban communities rather than rural, with the availability of broadband a prime example of the urban/rural divide.

They would like to see the return of the village policeman.

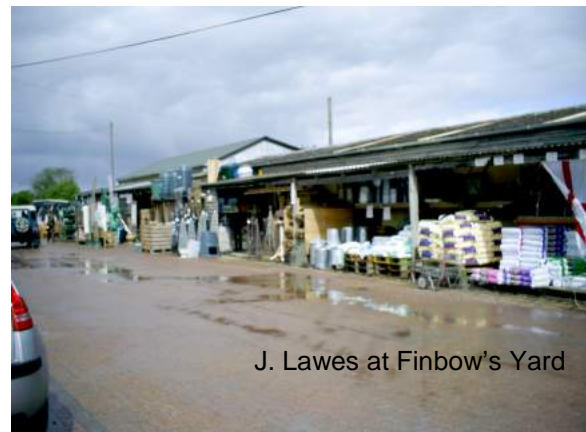


## Key Room for improvement

"Some businesses suffer from vandalism and theft."  
"There is no communication between businesses"  
"Farm employment has reduced in importance to the community"

## Key Actions

- Look for volunteers to start a Bacton business club.
- Encourage greater communication between businesses in the village, the Parish Council and other bodies such as the police community officer.
- Promote the economic development of Bacton both independently and with the help of other councils and relevant agencies.
- Ensure that the employment and economic requirements of Bacton are properly reflected in the planning strategies of councils and other agencies.



"It would be nice if a parish magazine just with clubs and up and coming events was available I lived in Bacton 2 years before realising there was a parish mag. but as I understand it you buy them from the shop. Perhaps just flyers put through doors on forthcoming events. I don't mind helping to deliver them. In Haughley the mag. is free and has more info. as it is a more regular mag. Therefore it is up to date and keeps villages aware of forthcoming events"

# Action Plan

<b>Housing Needs</b>				
<b>Action</b>	<b>Reason</b>	<b>Owner</b>	<b>Partners</b>	<b>Priority</b>
Future community building developments to have facility for off road parking (unless public transport is greatly improved) and adequate footpaths/cycle paths.	Congestion at peak times. To be considered by Parish Council when any future planning applications are submitted	Parish Council	Mid Suffolk DC Suffolk ACRE	High
Produce Supplementary Planning Guidance with the aim of retaining our village identity, its unique rural environment and influence future development plans, including the provision of more affordable housing for future generations.	The respondents to the questionnaire wish to have ways of safeguarding their village life.	Parish Council	Mid Suffolk DC Suffolk ACRE	High
Gather more definitive data through a formal housing survey	To make available affordable housing and housing for local families over a 10 year period.	Parish Council	Suffolk ACRE Housing Associations?	Medium
Relay wishes of local residents to District Council	To convey the wishes of the residents.	Parish Council	Mid Suffolk DC	Medium
<b>Travel &amp; Transport</b>				
<b>Action</b>	<b>Reason</b>	<b>Owner</b>	<b>Partners</b>	<b>Priority</b>
Tackle parking problems at Village Hall, Primary & Middle Schools, Shop Green	Congestion at peak times	Parish Council	Suffolk CC Mid Suffolk DC Shop/Garage owners School Heads	High
Investigate extending the area covered by the speed limit, to reduce speeds of cars, motorbikes & lorries through the village and reduce the number of HGVs	Concern over speeding through village and speed limit boundaries, and concern at the increase in HGV traffic. Many youngsters felt unsafe because of the speed of traffic through the parish.	Parish Council Police Safer Neighbourhood Team <a href="http://www.onesuffolk.co.uk/SaferSuffolk/MidSuffolkCentral/">http://www.onesuffolk.co.uk/SaferSuffolk/MidSuffolkCentral/</a>	Suffolk CC Volunteers	High/ Medium
Discuss with the relevant authorities how to improve safety for cyclists & pedestrians and extend the reach of pavements to outlying parts of the village and develop a cycle way. Press for a better designated & well maintained network of footpaths/pavements and cycle routes.	Create a safe footpath/cycle way that connects the amenities of the village. Estate to shop ↔ schools ↔ scout hall ↔ football pitches ↔ parks ↔ Finbows etc. Not just a conventional footpath but something safe for walkers and cyclists. Provide a cycle route (that could be extended over time), a safer, greener access to all local places. Youngsters feel it is too dangerous to cycle and walk to school and to visit friends.	Parish Council	Suffolk CC Volunteers Youth Council Schools	High

# Action Plan

<b>Travel &amp; Transport (cont.)</b>				
<b>Action</b>	<b>Reason</b>	<b>Owner</b>	<b>Partners</b>	<b>Priority</b>
Improve road maintenance	Concerns over volume of traffic and narrow roads in places.	Parish Council	Suffolk CC	Medium
Improve Public Transport. Improvements to Bus Services (routes and timings). Perhaps a minibus service targeting youth needs.	There is a need for busses at different times, publicise links with trains, and other busses to other destinations. And more than one bus a week to Ipswich. Improve the local bus service for all ages and disability groups. Many children said that a lack of suitable transport services hindered their social life.	Parish Council	Local Bus Companies Volunteers	Medium
Provide more bus shelters, school bus shelters (particularly Pound Hill but also other places) and bus stops	Requests for shelters at Turkey Hall Lane and school bus stops. Our youngsters do not like getting wet waiting for the school bus. More stops at Village Hall, Cow Green, Finbows & Scout Hall.	Parish Council	Volunteers Whom ever provides bus shelters! Suffolk CC?	High
Improve Street Lighting (Street lights along the main road through Bacton, are the property of Bacton parish council, and the ones on Earls Green, and Wheatlands estate, are the property of Suffolk County Council)	Suggestions are to have more street lights leading to the Village Hall and in the car park; at the access to Manor Surgery; leading to the Scout Hall; and on the roads to Bacton Stores from all directions. There were also suggestions to turn street lights off between 10pm or midnight and 5am.	Parish Council Suffolk CC	Suffolk CC	Medium
Investigate feasibility of providing Pedestrian Crossings in the village.	Requests for these at Pound Hill, Manor Farm Surgery and the Bacton Bull	Parish Council	Suffolk CC Mid Suffolk CC Police Safer Neighbourhood Team	High
Hedges need to be cut more often as they overgrow and cover footpaths.		Parish Council		Medium
<b>Safety &amp; Policing</b>				
<b>Action</b>	<b>Reason</b>	<b>Owner</b>	<b>Partner</b>	<b>Priority</b>
Investigate the re-establishment of the Neighbourhood Watch scheme, and establishment of the Nominate a Neighbour and Good Neighbour Schemes.	There is a demand for these. With the help of our Community Police Officers hold meetings to set these up again.	Parish Council	Volunteers, Police Safer Neighbourhood Team & Terry Spalding (Parish Magazine June 2010 p25)	High
Investigate the best way of communicating concerns to the local police.	There are concerns over traffic speed, noise, vandalism, dog fouling etc. <a href="http://www.onesuffolk.co.uk/SaferSuffolk/MidSuffolkCentral/">http://www.onesuffolk.co.uk/SaferSuffolk/MidSuffolkCentral/</a>	Parish Council	Volunteers & Police Safer Neighbourhood Team	Medium

# Action Plan

<b>Safety &amp; Policing (cont.)</b>				
<b>Action</b>	<b>Reason</b>	<b>Owner</b>	<b>Partner</b>	<b>Priority</b>
Help reduce and resolve neighbour disputes	There is considerable concern over issues of noise. Explore the opportunity to develop an informal advice and mediation service.	Parish Council Mid Suffolk DC	Citizens Advice Bureau Rector Police Safer Neighbourhood Team	Medium
Help Emergency Services to get to clients quickly	Publicise the need for residents to clearly display house numbers/names at the roadside	Parish Council	Volunteers WI, Rector	High
<b>Healthcare</b>				
<b>Action</b>	<b>Reason</b>	<b>Owner</b>	<b>Partner</b>	<b>Priority</b>
Discuss the information from the Parish Plan Statistics with the Practice Manager, Manor Farm Surgery.	The statistics show that there are a number of suggestions from the parishioners. For example more flexible opening hours, visiting chiropodist, counselling services etc.	Parish Council	Manor Surgery Practice Manager	Medium
Investigate how to transport patients to medical visits and collect prescriptions	241 people need help with transport to get to get to health services in & beyond the parish and 244 need help with collection of prescriptions. In the context of the Good Neighbour Scheme set up a list of driver volunteers.	Good Neighbour Scheme Co-ordinator	Manor Surgery Practice Manager Primary Care Trust Volunteers	Medium
<b>Services</b>				
<b>Action</b>	<b>Reason</b>	<b>Owner</b>	<b>Partner</b>	<b>Priority</b>
Lobby mobile phone operators for better coverage in Bacton	152 people rated mobile phone reception as poor	Parish Council	Volunteers	Medium
Review the provision of recycling facilities	Some residents feel these need to be improved	Parish Council	Volunteers	Low
Review the provision of litter bins, road maintenance & cleaning	Requested by residents.	Parish Council	Volunteers	Medium
Education of school children not to be litter bugs.	There is a big litter problem between the schools & Bacton Stores.	Parish Council	School Heads Police Safer Neighbourhood Team	High
Tackle dog fouling problems.	A large number of residents want dog owners to be educated about their responsibility to clean up mess.	Parish Council	Police Safer Neighbourhood Team Footpath warden	High
Sort out Fly Tipping Problems	Many residents have problems with Fly Tipping	Parish Council	Police Safer Neighbourhood Team	Medium
Make better use of existing school facilities, possibly even as an alternative to the existing village hall which has limited parking.		Parish Council	Middle School Head, Village Hall Committee, Volunteers	Medium

# Action Plan

## Services (cont.)

Make the LEA aware of the resistance to change of 3 to 2 tier schooling system.	A large number in the parish are against this (529) and a small number are happy to see it go ahead (109). The use of the school buildings as community buildings may be in jeopardy.	Parish Council	LEA Mid Suffolk DC	Medium
---	---	----------------	-----------------------	--------

## Communication and Access to Information

Action	Reason	Owner	Partner	Priority
Improve communication within the village.	Many people in the village are simply not aware of what already exists in terms of activities and services. Use information from this survey to put like minded volunteers together so that many of the Actions can be tackled by them.	Parish Council	All those who gave their names as volunteers through the Parish Plan process. Any active Groups in Bacton. All residents in the village.	High
Develop a Welcome Pack for new residents	Newcomers frequently feel neglected and unwelcome and need to be introduced to the village.	Parish Council	Volunteers Rector	High
Resurrect the Village Directory	To keep residents up to date with the current activities available, services & mobile services and facilities in the village.	Parish Council	Terry Spalding (Parish Magazine June 2010 p22/p25) & Volunteers	High
Develop a Village Newsletter	To keep residents up to date with current and forthcoming events, current activities available and local business adverts. Also a list of evening classes held in the schools. Would this complement or replace the Parish Magazine?	Parish Council	Volunteers Any active Groups in Bacton. All residents in the village.	Medium
Develop a Village Website or add to the Parish Council Website	To keep residents informed of community activities. Talk to the chap who is running the Bacton website about adding a Forum that could be monitored by the Parish Clerk	Parish Council	Volunteers	Medium
Produce a Village Map	To help find addresses.	Parish Council	Volunteers	Medium



# Action Plan

<b>Faith</b>				
<b>Action</b>	<b>Reason</b>	<b>Owner</b>	<b>Partner</b>	<b>Priority</b>
Support the development of a community room and community area within the Church.	A sub-committee is already seeking funds for facilities within the church and this may well provide an area for youngsters to shelter and the unemployed and elderly to be welcome in a Day/Evening Centre.	PCC	Parish Council Church Friends Bacton Play Centre Youth Club Over 60s	Medium
Establish area representatives to tell the Rector when new people arrive.	There is a need to welcome new people in to the village.	PCC	Volunteers Rector	High

<b>Community Recreation &amp; Amenities</b>				
<b>Action</b>	<b>Reason</b>	<b>Owner</b>	<b>Partner</b>	<b>Priority</b>
Investigate the use of the Middle School for recreation	There was substantial interest in further sports and leisure facilities.	Parish Council	Volunteers Sports Funding Bodies.	Medium
Investigate the viability of starting new evening classes and the use of the Middle and Primary Schools for these	There is an interest in starting & attending new classes.	Parish Council	Volunteers	Medium
Improve advertising of the current activities available.	There seems to be a lack of knowledge about what is on offer.	Parish Council	Any active Groups in Bacton. All residents in the village.	High
Better provision for Bacton's older residents.	Activities to keep older people mobile & a place to meet people of their own age e.g. luncheon club	Volunteers	Parish Council	High

<b>Youth Wishes</b>				
<b>Action</b>	<b>Reason</b>	<b>Owner</b>	<b>Partner</b>	<b>Priority</b>
Develop a Youth Centre including sports, arts, computer facilities, a café, a cinema - potentially at the Community Middle School.	A very high proportion of respondents stated that the village lacked things for them to do.	LEA Parish Council	Volunteers	High
Sheltered area to 'hang out', perhaps at the Playing Field.	Some respondents suggested that there were no places to meet with friends (although others were concerned about anti-social behaviour).	Parish Council	Volunteers	Medium

# Action Plan

<b>Youth Wishes (cont.)</b>				
<b>Action</b>	<b>Reason</b>	<b>Owner</b>	<b>Partner</b>	<b>Priority</b>
Examine ways of improving the play areas and parks/fields.	Some youngsters felt that the play facilities were very poor. Adults also support improvements to these. Seek funding to improve play facilities at St Mary's playing fields. Could the Primary School Play Area be used out of school hours?	Parish Council	Parents of young children. Volunteers Sports Funding Bodies.	Medium
Give the youth a voice in the community by setting up a young persons forum.	Investigate setting up a Youth Council. To give the young people in the village a voice in the community and ownership of their facilities and activities. To give them a channel of communication with those who may be able to provide the facilities that they wish to have in the village.	Parish Council	Youth Club Volunteers Schools Play Centre	High

<b>Business Community</b>				
Investigate Starting the Bacton Business Club	The business community would like the facility to share experiences, information & advice.	Volunteer	Business Community	Medium

<b>Parish Council</b>				
Deliver Parish Plan summaries to all homes in the village.	To give everyone in the community a chance to assess the input and volunteer to help.	Parish Council	Parish Plan Steering Group	High
Identify an Implementation Group to oversee the implementation of the Parish plan.	To give impetus to the Actions while they are still fresh in everyone's minds.	Parish Council	Parish Plan Steering Group	High

**“Primary school - accident waiting to happen”**



“Primary school parking on main road is seriously dangerous on the corner! Needs looking at urgently before someone is badly injured! Will it take this before something is done? Hope it's sorted sooner rather than later.”



“Put a time limit at Primary School parking - some stand talking up to 10am on a bad bend. Say 10 minutes drop off time. Laurel hedge opposite new path needs cutting back, no room for large vehicles to pass”



“For those children living in Bacton attending Primary School how about a 'walking bus'. Too many parents using their cars, when they could walk.”



Primary School parking made more dangerous by narrowing road. Pavement mainly used by parents to stand and gossip.

“The Primary School parking must be looked at; the parents who park on the road are most inconsiderate. It is extremely dangerous; yellow lines should be intermittently placed”

**Volunteer Form**

We already have a number of volunteers who filled in the form in the Parish Plan questionnaire – but the more the merrier! If you would like to become involved and help in any way please enter your details below and either e-mail or send them to Helen Thomson, [helen@faxbase.co.uk](mailto:helen@faxbase.co.uk), Cromwell House, Rectory Road, Bacton IP14 4LE.

Please feel free to include any other information.

Thank you very much!

What is it that you are interested in doing? .....

.....

.....

Name .....

Address .....

.....

Contact Telephone numbers .....

e-mail .....





Bacton Manor



Cottages at Cow Green



Vintage Cars at Bacton Fair



Broadway House

