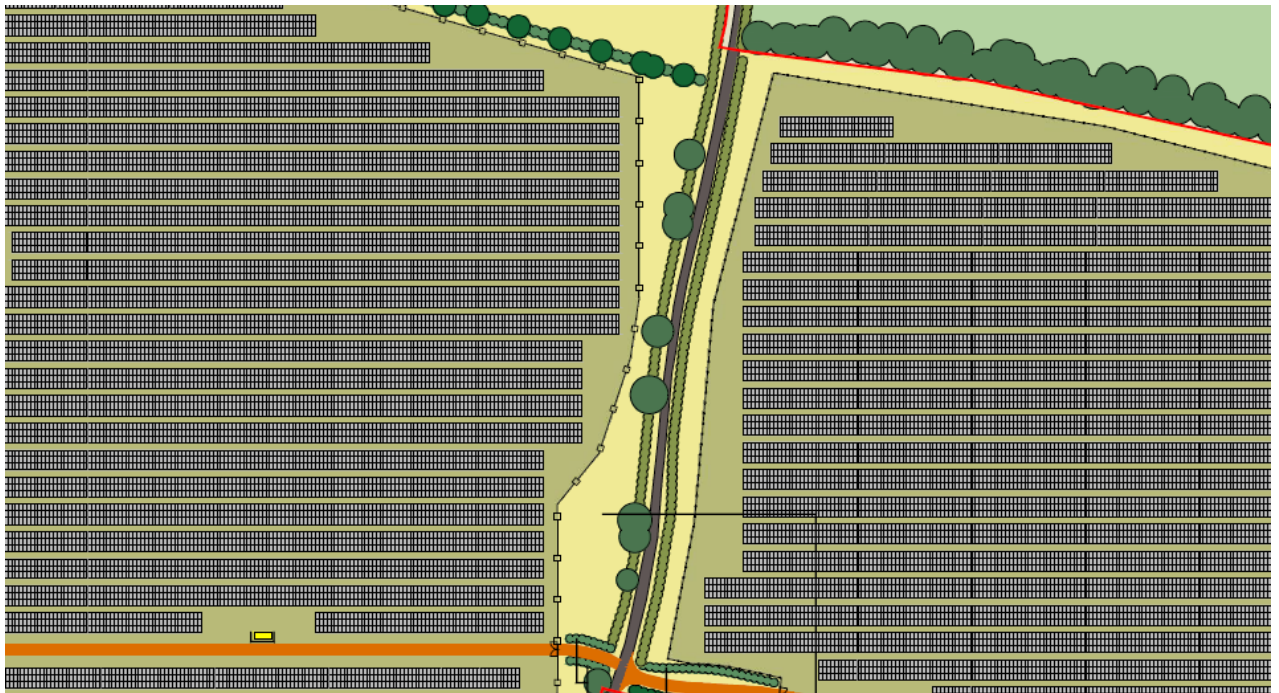


# Appendix 1 – Amended Scheme Clarification Note.

- 1.1. **Refused Scheme** – General Arrangement (ref. 3223-01-03a and 3223-01-03b) and Landscape Proposals (ref. 3223-01-13) prepared by Axis.
- 1.2. **Amended Scheme** – Amended General Arrangement (ref. 3223-01- 03A Rev A and 3223-01-03b Rev A) and Landscape Proposals (ref. 3223-01-13 Rev A) prepared by Axis.
- 1.3. The annotated plan below shows the location of the amendments in the context of the whole site. The detail for each amendment is then set out on the following pages.



## Amendment A

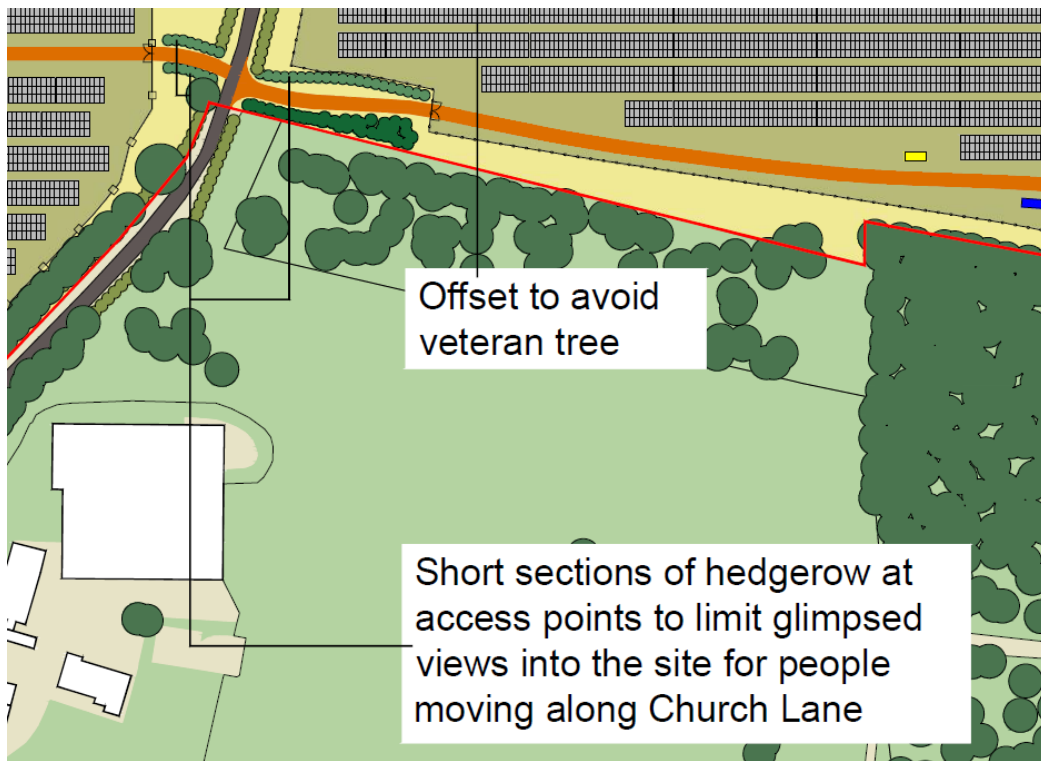


**Refused Scheme** – As originally proposed with fenceline closer to Church Lane.



**Amendment A** – Increased offset between Church Lane and the fenceline for the solar development on both the east and west sides. The increased offset allows for additional woodland belt planting to be incorporated either side of Church Lane, increasing screening, landscape integration, and habitat connectivity.

## Amendment B

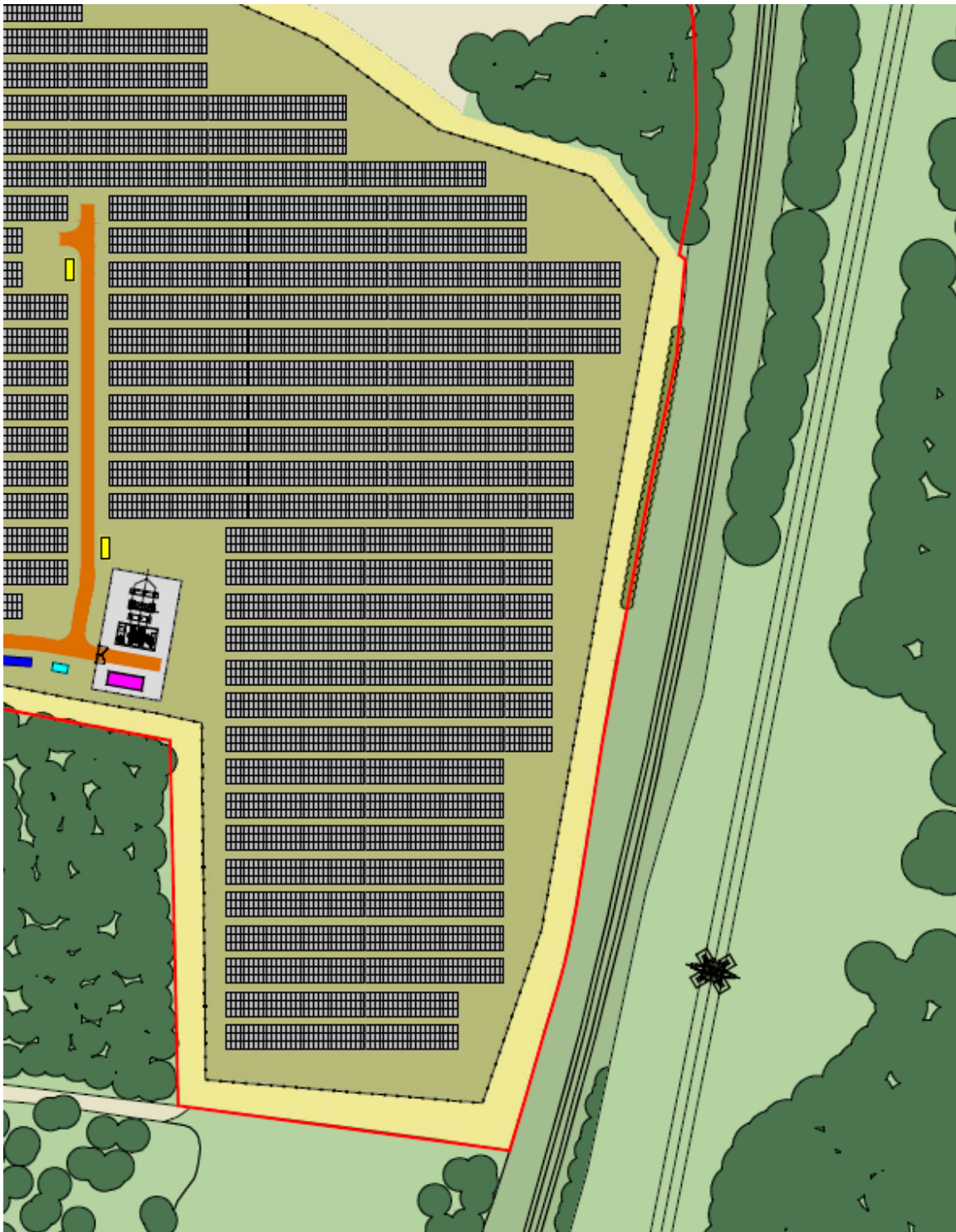


**Refused Scheme** - Limited additional planting on southern boundary to Falstaff Manor.

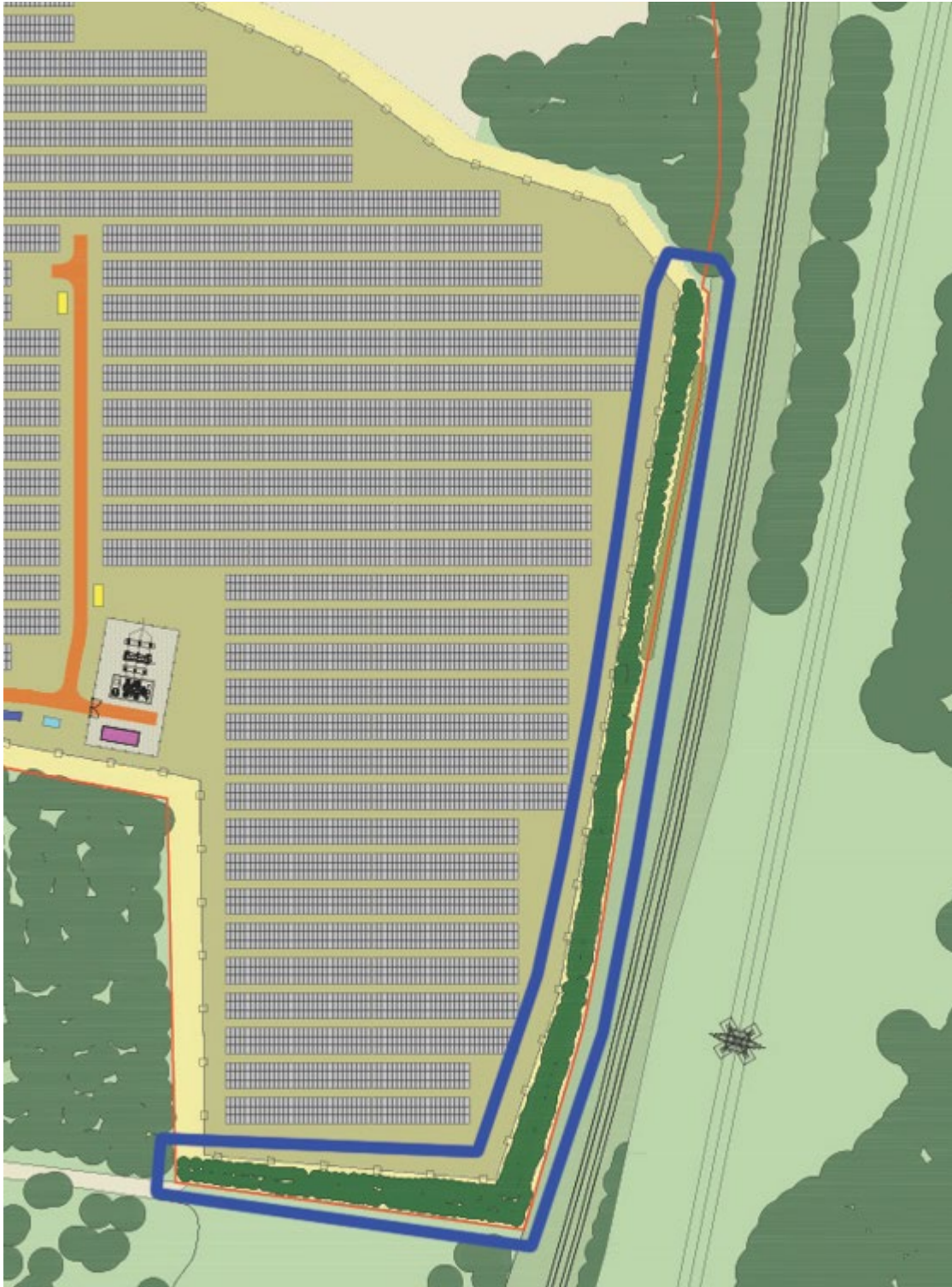


**Amendment B** - Additional woodland belt planting to the north side of Falstaff Manor to reduce any potential intervisibility between the site and the Manor.

## Amendment C

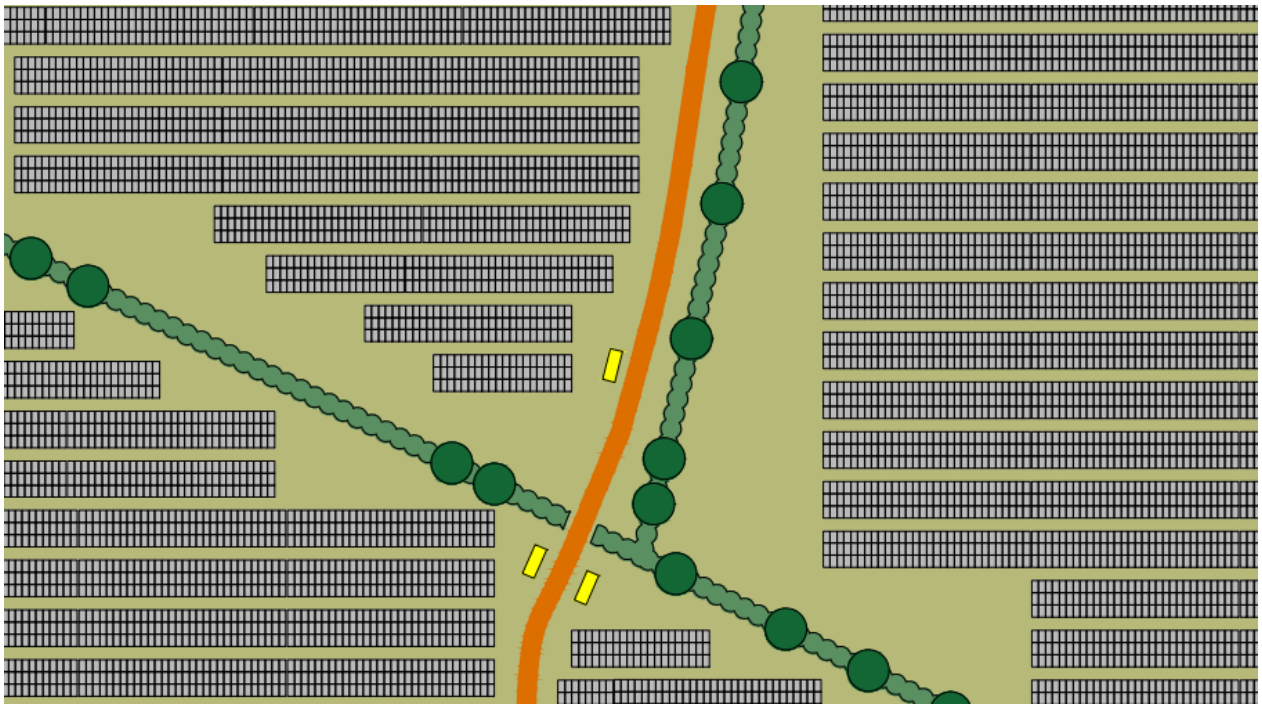


**Refused Scheme** – Limited additional planting on eastern boundaries.

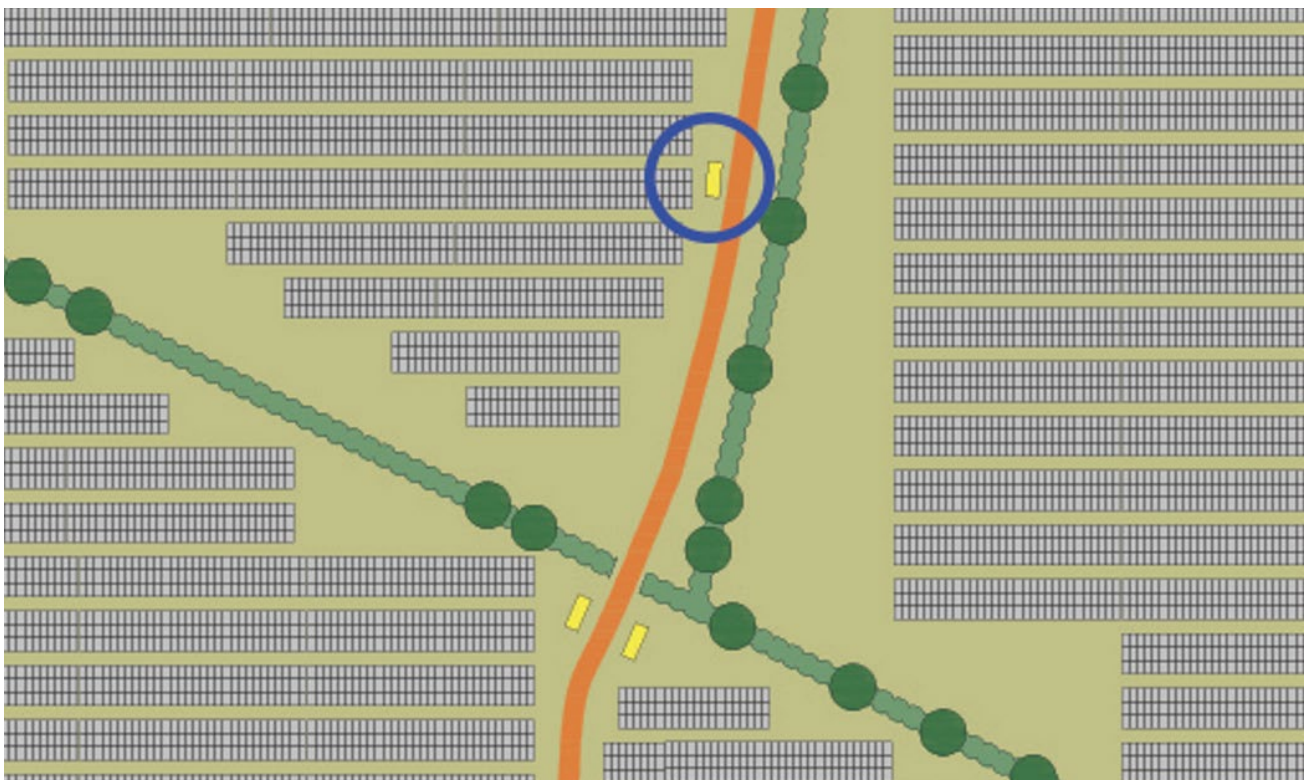


**Amendment C** - Additional woodland belt planting along the southern and eastern boundaries of the eastern parcel to provide greater screening to this edge of the development, including between the solar farm and the railway line.

## Amendment D



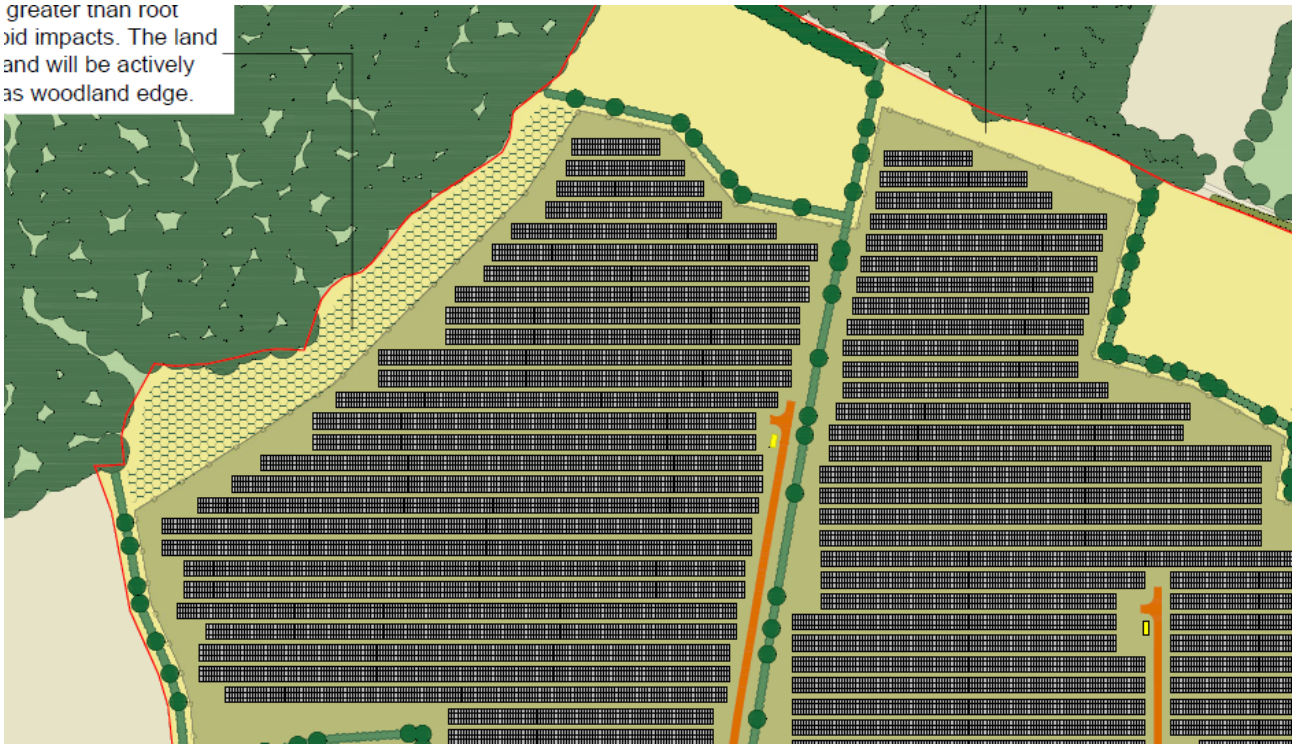
**Refused Scheme** - Proposed northern-most of the above three transformers within the central part of the western parcel.



**Amendment D** - A proposed transformer within the central part of the western parcel has been relocated further north slightly, for operational reasons.

## Amendment E

greater than root  
oid impacts. The land  
and will be actively  
as woodland edge.

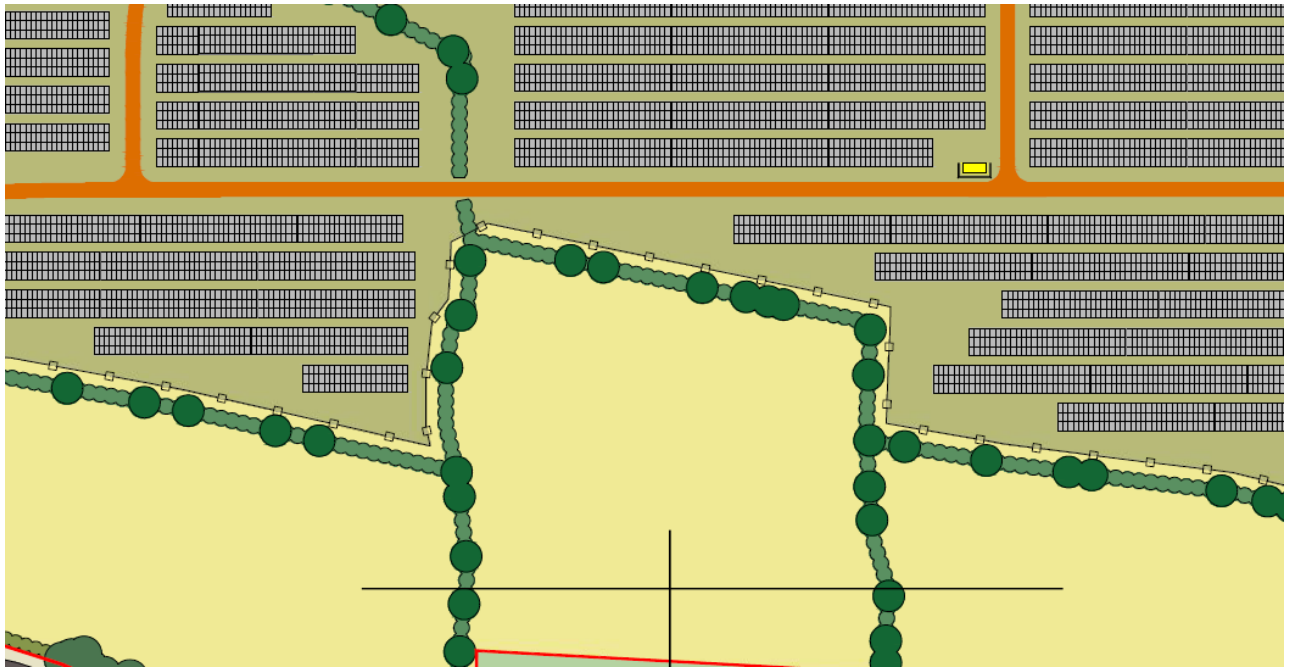


## Refused Scheme - No gaps in hedgerows for access

s greater than root  
oid impacts. The land  
lland will be actively  
as woodland edge.



**Amendment E** - Gaps introduced to hedgerows to provide access between fields for agricultural purposes.



**Refused Scheme** - No gaps in hedgerows for access



**Amendment E** - Gaps introduced to hedgerows to provide access between fields for agricultural purposes.