



# People and Places

## What is it like where you live?

What things in your town or village have been built?



Who made the decisions for those to be built?

What do they look like? Do you like them?



What's your favourite place to go where you live?

## How does it work?

The Council will give permission for things to built via something called Planning Permission.

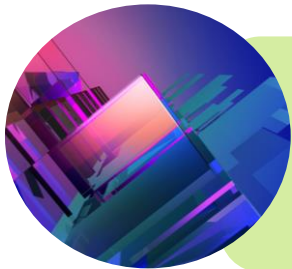


*What about old buildings, do you think they needed permission?*



Some are built by building companies called developers. Some might be built by a person on their own but all of them have to obey rules to make sure they are safe.

*What other rules do you think might have to follow?*



The council are trying a new way to help design places to live and work and we'd love to hear your ideas. Just fill in the questionnaire and return to [peopleandplaceteam@baberghmidsuffolk.gov.uk](mailto:peopleandplaceteam@baberghmidsuffolk.gov.uk)

# How can you tell us what's important to you?

Use this link/fill in the questionnaire and tell us what you think makes (insert village/town name) special to you so we can make better decisions in the future for everyone who lives here.

Your answers and views will go into the People and Place Plan and be used to help us make sure we ask builders and developers for the right things for our whole community.

Add group details for each area and how to contact/get involved.

We would like to hear from as many people as possible so please take part if you're able!



## QR code

Please scan the below QR code if you would like to undertake the questionnaire and find out some more information

